

192/2013 - 13 December 2013

Third quarter of 2013 compared with second quarter of 2013

Employment stable in euro area and EU28

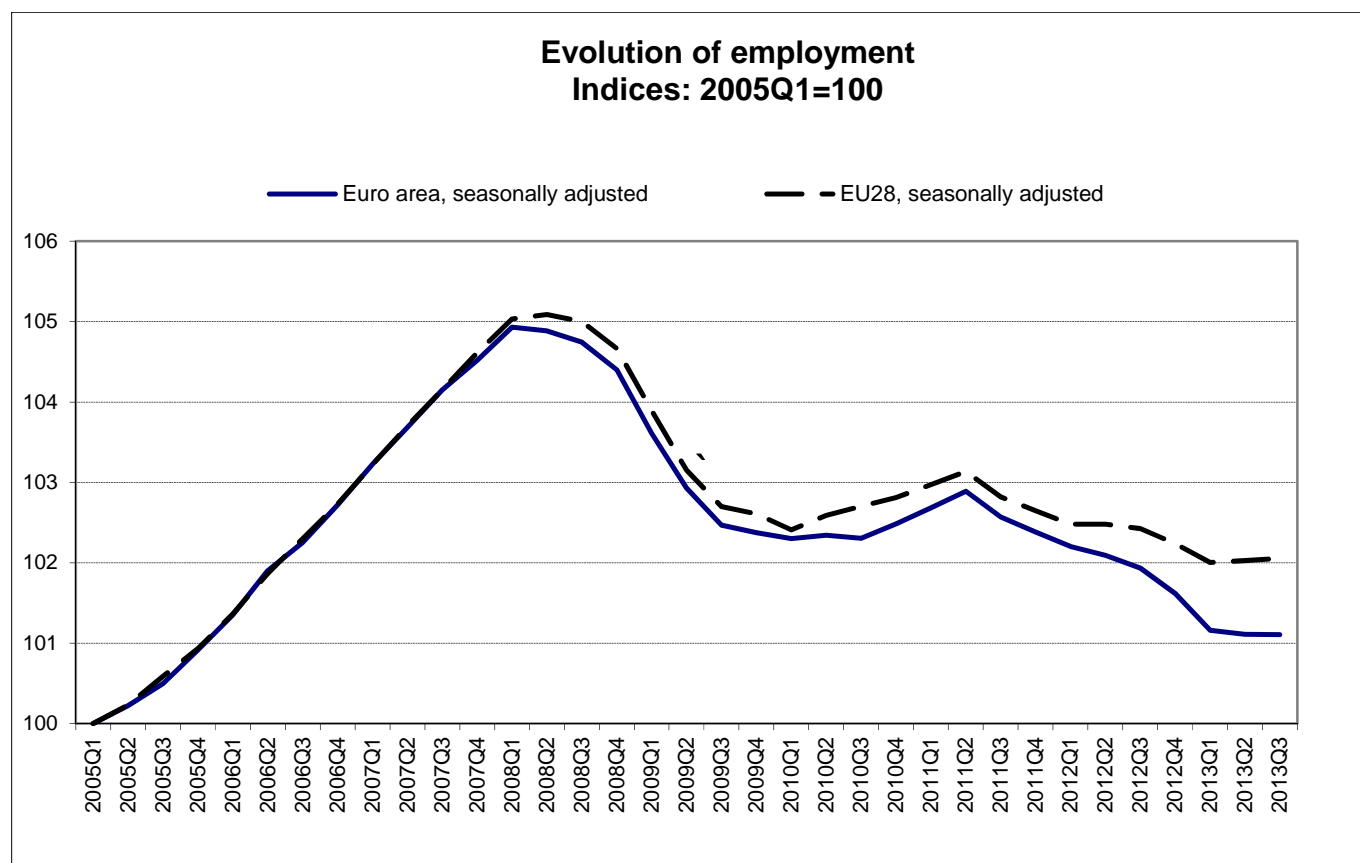
-0.8% and -0.3% respectively compared with the third quarter of 2012

The number of persons employed¹ remained stable in both the **euro area**² (EA17) and the **EU28**² in the third quarter of 2013 compared with the previous quarter, according to national accounts estimates published by **Eurostat, the statistical office of the European Union**. In the second quarter of 2013, employment was also stable in both zones. These figures are seasonally adjusted.

Compared with the same quarter of the previous year, employment fell by 0.8% in the **euro area** and by 0.3% in the **EU28** in the third quarter of 2013 (after -1.1% and -0.6% respectively in the second quarter of 2013).

Eurostat estimates that, in the third quarter of 2013, 223.2 million men and women were employed in the **EU28**, of which 145.0 million were in the **euro area**. These figures are seasonally adjusted.

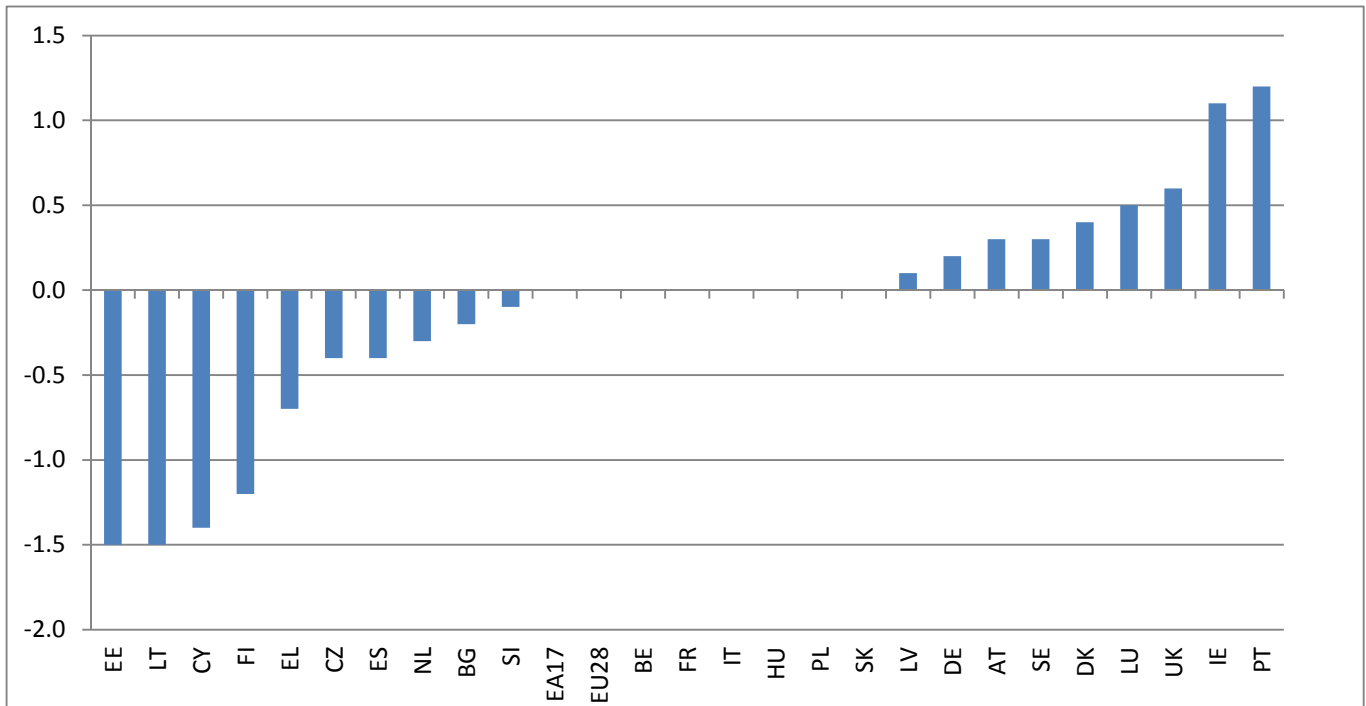
These quarterly data on employment provide a picture of labour input consistent with the output and income measure of national accounts.



Employment growth by Member States

Among those Member States for which data are available, **Portugal** (+1.2%), **Ireland** (+1.1%), the **United Kingdom** (+0.6%) and **Luxembourg** (+0.5%) recorded the highest increases compared with the previous quarter, while **Estonia** and **Lithuania** (both -1.5%), **Cyprus** (-1.4%), **Finland** (-1.2%) and **Greece** (-0.7%) registered the largest decreases.

Member States' employment growth rates in the third quarter of 2013
% change over the previous quarter, seasonally adjusted



1. Employment covers employees and self-employed working in resident production units (i.e. the domestic employment concept). Unless otherwise stated, all employment estimates in this release use *persons* as the measurement unit. ESA95 acknowledges other possible measures for employment: jobs, full-time equivalents and total hours worked. More information on employment in national accounts is available on Eurostat's website:
http://epp.eurostat.ec.europa.eu/portal/page/portal/national_accounts/methodology/employment.
2. The euro area (EA17) includes Belgium, Germany, Estonia, Ireland, Greece, Spain, France, Italy, Cyprus, Luxembourg, Malta, the Netherlands, Austria, Portugal, Slovenia, Slovakia and Finland.
The European Union (EU28) includes Belgium (BE), Bulgaria (BG), the Czech Republic (CZ), Denmark (DK), Germany (DE), Estonia (EE), Ireland (IE), Greece (EL), Spain (ES), France (FR), Croatia (HR), Italy (IT), Cyprus (CY), Latvia (LV), Lithuania (LT), Luxembourg (LU), Hungary (HU), Malta (MT), the Netherlands (NL), Austria (AT), Poland (PL), Portugal (PT), Romania (RO), Slovenia (SI), Slovakia (SK), Finland (FI), Sweden (SE) and the United Kingdom (UK).
3. The Polish statistical office has revised the employment data from the first quarter of 2012, based on the results of the latest census. For this reason 2012 data are currently not comparable with data of earlier years, and therefore annual growth rates for 2012 are not published.

Issued by: **Eurostat Press Office**

Tim ALLEN
Tel: +352-4301-33 444
eurostat-pressoffice@ec.europa.eu

For further information on data:

Christine GERSTBERGER
Tel: +352-4301-30 175
estat-gdp-query@ec.europa.eu

Eurostat news releases on the internet: <http://ec.europa.eu/eurostat>
Selected Principal European Economic Indicators: <http://ec.europa.eu/eurostat/euroindicators>

Employment growth rates*

	Percentage change compared with the previous quarter				Percentage change compared with the same quarter of the previous year			
	2012	2013			2012	2013		
	Q4	Q1	Q2	Q3	Q4	Q1	Q2	Q3
EA17	-0.3	-0.4	0.0	0.0	-0.8	-1.0	-1.1	-0.8
EU28	-0.2	-0.2	0.0	0.0	-0.4	-0.6	-0.6	-0.3
Member States								
Belgium	0.0	-0.2	-0.2	0.0	0.0	-0.2	-0.4	-0.4
Bulgaria	-0.3	0.0	0.3	-0.2	-2.3	-1.7b	0.7	-0.1
Czech Republic	0.0	0.7	0.5	-0.4	0.8	1.1	1.3	0.7
Denmark	-0.2	0.0	0.5	0.4	-0.5	-0.1	0.4	0.9
Germany	0.1	0.2	0.1	0.2	0.8	0.7	0.6	0.6
Estonia	-0.9	2.3	1.4	-1.5	1.2	2.3	3.0	1.3
Ireland	0.6	0.6	0.8	1.1	0.1	1.1	1.9	3.2
Greece	0.0	-2.3	0.1	-0.7	-6.5	-6.5	-4.3	-2.9
Spain	-1.2	-1.1	-0.5	-0.4	-4.4	-4.2	-3.8	-2.9
France	-0.1	0.0	0.0	0.0	-0.2	-0.2	-0.3	-0.3
Croatia**	:	:	:	:	-5.4	-1.1	-1.6	-1.6
Italy	-0.5	-1.3	-0.2	0.0	-0.1	-1.3	-2.2	-2.1
Cyprus	-1.3	-1.5	-2.0	-1.4	-4.8	-4.9	-6.1	-6.0
Latvia	0.3	1.6	-0.3	0.1	2.1	3.5	2.7	1.5
Lithuania	-0.8	1.7	0.8	-1.5	0.8	1.2	1.0	0.8
Luxembourg	0.6	0.1	0.6	0.5	2.3	1.6	1.7	1.8
Hungary	0.0	0.0	0.4	0.0	0.0	-0.1	0.1	0.4
Malta	0.6	1.0	0.2	:	2.7	2.5	3.8	1.7
Netherlands	-0.2	-0.2	-0.3	-0.3	-0.5	-0.9	-0.8	-1.0
Austria	0.2	0.2	0.2	0.3	0.9	0.6	0.6	0.8
Poland³	-0.1	0.2	0.0	0.0	:	-0.6	-0.5	0.1
Portugal	-2.1	-2.2	0.8	1.2	-4.3	-5.2	-4.0	-2.4
Romania	:	:	:	:	1.8	-0.1	-0.1	0.5
Slovenia	-0.7	-0.7	-0.3	-0.1	-1.6	-2.7	-2.5	-1.7
Slovakia	-0.4	-0.2	-0.3	0.0	-0.6	-1.0	-1.3	-0.9
Finland	-0.2	-0.4	0.1	-1.2	-0.6	-1.1	-0.7	-1.4
Sweden	0.2	0.3	0.1	0.3	0.5	0.8	0.8	1.0
United Kingdom	0.6	-0.1	0.2	0.6	2.1	1.4	1.0	1.3
EFTA countries								
Norway	0.3	0.3	0.4	0.5	1.9	1.4	1.2	1.4

: Data not available

* Percentage change in the number of persons employed in resident production units compared with the previous quarter based on seasonally adjusted data. Percentage change compared with the same quarter of the previous year based on non-seasonally adjusted data.

** Employment data based on national employment concept

T1 - TOTAL EMPLOYMENT AND EMPLOYMENT BY INDUSTRY

t/t-1 - PERCENTAGE CHANGE OVER THE PREVIOUS QUARTER – SEASONALLY ADJUSTED

NACE Rev 2	Total economy				Agriculture, forestry and fishing				Industry (mining, manufacturing, electricity, water and waste)				of which: Manufacturing				Construction				Trade, transport, accommodation and food service activities			
Section					A				B, C, D and E				C				F				G, H and I			
	2012		2013		2012		2013		2012		2013		2012		2013		2012		2013		2012		2013	
	Q4	Q1	Q2	Q3	Q4	Q1	Q2	Q3	Q4	Q1	Q2	Q3	Q4	Q1	Q2	Q3	Q4	Q1	Q2	Q3	Q4	Q1	Q2	Q3
EA17	-0.3	-0.4	0.0	0.0	-0.8	-1.5	1.8	-0.3	-0.5	-0.4	-0.4	-0.3	-0.6	-0.4	-0.4	-0.3	-1.6	-1.6	-1.0	-0.3	-0.4	-0.4	0.0	0.0
EU28	-0.2	-0.2	0.0	0.0	-1.0	-1.4	1.8	-0.5	-0.6	-0.2	-0.4	-0.2	-0.6	-0.2	-0.4	-0.1	-1.4	-0.9	-0.5	0.3	-0.1	-0.2	-0.1	0.1

NACE Rev 2	Information and communication				Financial and insurance activities				Real estate activities				Professional and support service activities				Administration and other public services				Arts, entertainment and other services			
Section	J				K				L				M and N				O, P and Q				R, S, T and U			
	2012		2013		2012		2013		2012		2013		2012		2013		2012		2013		2012		2013	
	Q4	Q1	Q2	Q3	Q4	Q1	Q2	Q3	Q4	Q1	Q2	Q3	Q4	Q1	Q2	Q3	Q4	Q1	Q2	Q3	Q4	Q1	Q2	Q3
EA17	0.8	-0.2	0.1	-0.1	-0.1	-0.1	-0.1	-0.1	-0.6	-0.7	0.5	0.4	-0.3	-0.6	0.5	0.4	0.1	-0.2	-0.2	0.1	-0.1	0.0	-0.1	0.1
EU28	0.5	0.5	0.0	-0.5	-0.6	0.7	-0.4	0.0	-1.9	2.2	1.6	-1.3	0.0	-0.2	0.6	0.1	0.3	-0.2	0.0	0.1	0.6	-0.1	-0.3	0.3

T2 - TOTAL EMPLOYMENT AND EMPLOYMENT BY INDUSTRY

t/t-4 - PERCENTAGE CHANGE OVER THE SAME QUARTER OF THE PREVIOUS YEAR – NON-SEASONALLY ADJUSTED

NACE Rev 2	Total economy				Agriculture, forestry and fishing				Industry (mining, manufacturing, electricity, water and waste)				of which: Manufacturing				Construction				Trade, transport, accommodation and food service activities			
Section					A				B, C, D and E				C				F				G, H and I			
	2012		2013		2012		2013		2012		2013		2012		2013		2012		2013		2012		2013	
	Q4	Q1	Q2	Q3	Q4	Q1	Q2	Q3	Q4	Q1	Q2	Q3	Q4	Q1	Q2	Q3	Q4	Q1	Q2	Q3	Q4	Q1	Q2	Q3
EA17	-0.8	-1.0	-1.1	-0.8	-2.2	-3.2	-1.8	-0.5	-1.3	-1.6	-1.4	-1.6	-1.4	-1.5	-1.5	-1.6	-5.0	-5.7	-6.2	-4.4	-1.1	-1.2	-1.0	-1.0
EU28	-0.4	-0.6	-0.6	-0.3	-0.9	-2.0	-1.1	-0.4	-1.2	-1.3	-1.3	-1.1	-1.2	-1.4	-1.2	-1.1	-4.3	-4.4	-4.3	-2.5	-0.5	-0.8	-0.8	-0.5

NACE Rev 2	Information and communication				Financial and insurance activities				Real estate activities				Professional and support service activities				Administration and other public services				Arts, entertainment and other services			
Section	J				K				L				M and N				O, P and Q				R, S, T and U			
	2012		2013		2012		2013		2012		2013		2012		2013		2012		2013		2012		2013	
	Q4	Q1	Q2	Q3	Q4	Q1	Q2	Q3	Q4	Q1	Q2	Q3	Q4	Q1	Q2	Q3	Q4	Q1	Q2	Q3	Q4	Q1	Q2	Q3
EA17	1.6	0.4	0.1	0.6	-0.8	-1.2	-1.1	-0.4	-1.3	-1.5	-2.2	-0.5	0.5	0.2	0.3	0.1	-0.1	-0.3	-0.4	-0.1	1.4	0.6	0.2	-0.1
EU28	2.8	1.9	1.6	0.4	-0.2	-0.1	-0.7	-0.5	-0.9	1.8	3.3	0.5	1.0	1.2	1.1	0.5	-0.1	-0.2	0.0	0.3	1.2	0.3	-0.2	0.4