

141/2016 - 15 July 2016

May 2016

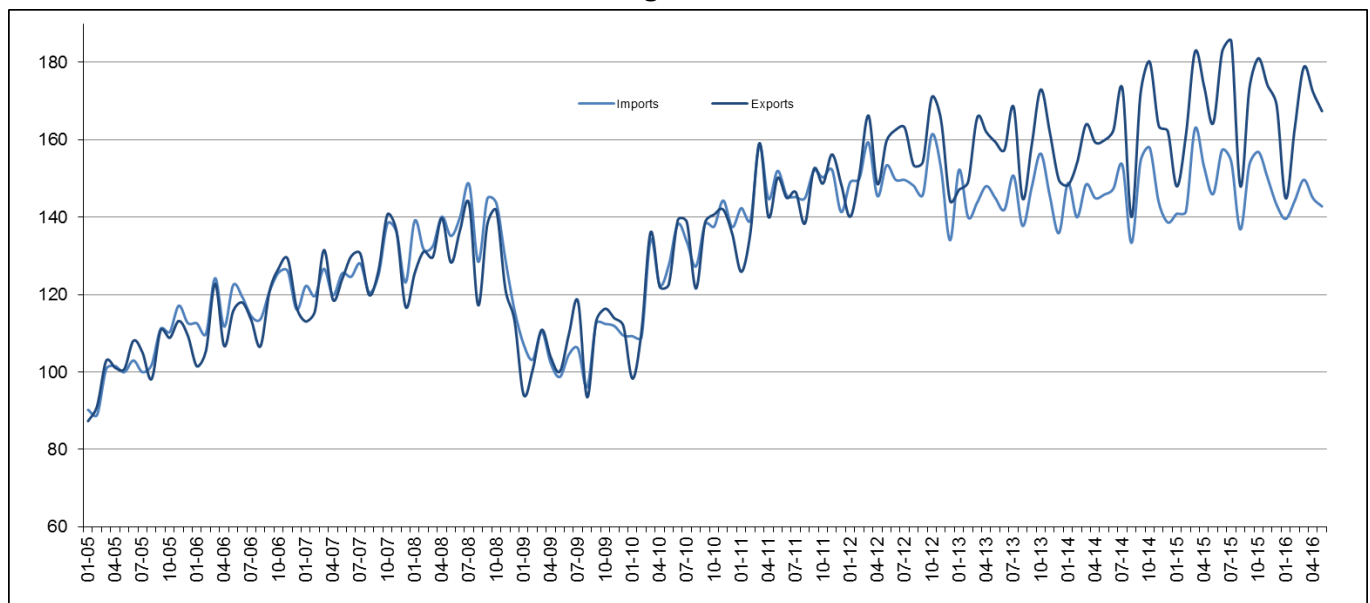
# Euro area international trade in goods surplus €24.6 bn

€6.4 bn surplus for EU28

## Euro area

The first estimate for **euro area** (EA19) exports of goods to the rest of the world in May 2016 was €167.4 billion, an increase of 2% compared with May 2015 (€164.3 bn). Imports from the rest of the world stood at €142.8 bn, a fall of 2% compared with May 2015 (€146.0 bn). As a result, the **euro area** recorded a €24.6 bn surplus in trade in goods with the rest of the world in May 2016, compared with +€18.3 bn in May 2015. **Intra-euro area** trade rose to €139.4 bn in May 2016, up by 1% compared with May 2015.

These data are released by **Eurostat, the statistical office of the European Union**.

**International trade in goods of the euro area, € bn**

In January to May 2016, **euro area** exports of goods to the rest of the world stood at €826.6 bn (nearly stable compared with January-May 2015) and imports at €721.3 bn (-3% compared with January-May 2015). As a result the **euro area** recorded a surplus of €105.3 bn, compared with +€85.9 bn in January-May 2015. **Intra-euro area** trade was €705.5 bn in January-May 2016 (+1% compared with January-May 2015).

**EA19 trade - non seasonally adjusted data****bn €**

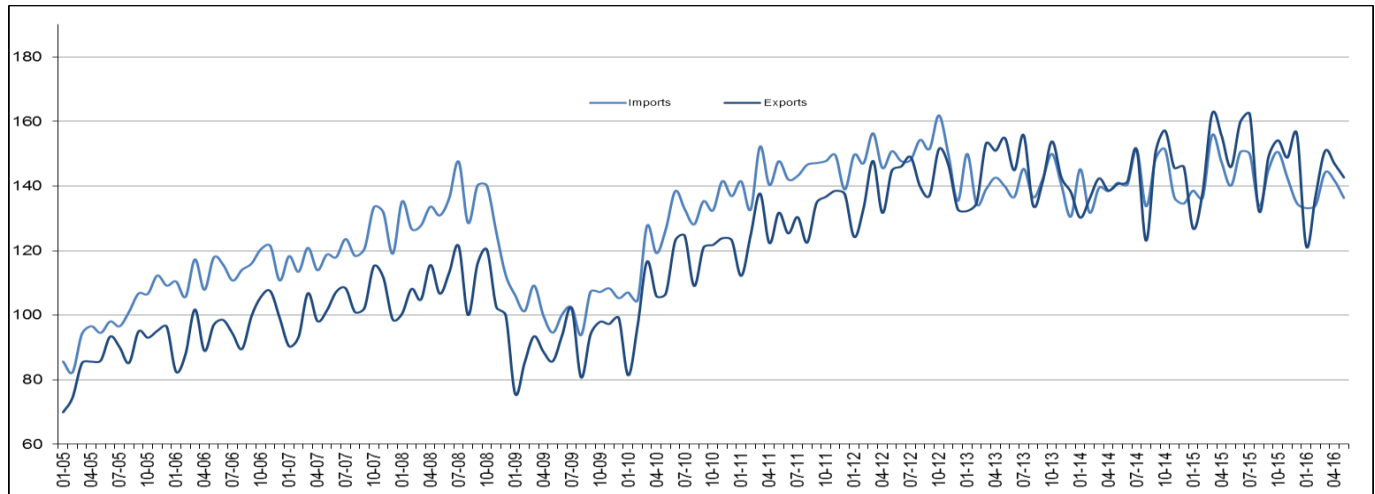
Flows	May 15	May 16	Growth	Jan-May 15	Jan-May 16	Growth
Extra-EA19 exports	164.3	167.4	2%	830.2	826.6	0%
Extra-EA19 imports	146.0	142.8	-2%	744.3	721.3	-3%
Extra-EA19 trade balance	18.3	24.6		85.9	105.3	
Intra-EA19 trade	137.6	139.4	1%	700.3	705.5	1%

The source dataset is available [here](#).

## European Union

The first estimate for **extra-EU28** exports of goods in May 2016 was €142.7 billion, down by 2% compared with May 2015 (€145.9 bn). Imports from the rest of the world stood at €136.3 bn, down by 3% compared with May 2015 (€140.1 bn). As a result, the **EU28** recorded a €6.4 bn surplus in trade in goods with the rest of the world in May 2016, compared with +€5.8 bn in May 2015. **Intra-EU28** trade rose to €252.0 bn in May 2016, +1% compared with May 2015.

### International trade in goods of the EU28, € bn



In January to May 2016, **extra-EU28** exports of goods stood at €699.0 bn (-4% compared with January-May 2015) and imports at €689.5 bn (also -4% compared with January-May 2015). As a result, the **EU28** recorded a surplus of €9.5 bn, compared with +€10.5 bn in January-May 2015. **Intra-EU28** trade was €1 282.1 bn in January-May 2016 (+1% compared with January-May 2015).

### EU28 trade - non seasonally adjusted data

bn €

Flows	May 15	May 16	Growth	Jan-May 15	Jan-May 16	Growth
Extra-EU28 exports	145.9	142.7	-2%	728.9	699.0	-4%
Extra-EU28 imports	140.1	136.3	-3%	718.4	689.5	-4%
Extra-EU28 trade balance	5.8	6.4		10.5	9.5	
Intra-EU28 dispatches	249.0	252.0	1%	1 264.3	1 282.1	1%

The source dataset is available [here](#).

### Main products - EU28

bn €

	Extra-EU28 exports			Extra-EU28 imports			Trade balance	
	Jan-May 15	Jan-May 16	Growth	Jan-May 15	Jan-May 16	Growth	Jan-May 15	Jan-May 16
<b>Total</b>	<b>728.9</b>	<b>699.0</b>	<b>-4%</b>	<b>718.4</b>	<b>689.5</b>	<b>-4%</b>	<b>10.5</b>	<b>9.5</b>
<b>Primary goods:</b>	<b>101.3</b>	<b>90.6</b>	<b>-11%</b>	<b>218.3</b>	<b>169.6</b>	<b>-22%</b>	<b>-117.0</b>	<b>-79.0</b>
<i>Food &amp; drink</i>	45.7	46.3	1%	45.0	45.3	1%	0.8	1.0
<i>Raw materials</i>	19.1	17.7	-7%	30.6	28.2	-8%	-11.5	-10.5
<i>Energy</i>	36.5	26.5	-27%	142.7	96.1	-33%	-106.3	-69.6
<b>Manufactured goods:</b>	<b>598.7</b>	<b>586.2</b>	<b>-2%</b>	<b>480.9</b>	<b>487.9</b>	<b>1%</b>	<b>117.7</b>	<b>98.2</b>
<i>Chemicals</i>	129.9	127.7	-2%	77.9	78.9	1%	52.0	48.8
<i>Machinery &amp; vehicles</i>	302.1	297.1	-2%	218.6	224.4	3%	83.5	72.6
<i>Other manuf'd goods</i>	166.6	161.4	-3%	184.4	184.6	0%	-17.8	-23.2
<b>Other</b>	<b>28.9</b>	<b>22.2</b>	<b>-23%</b>	<b>19.2</b>	<b>32.0</b>	<b>67%</b>	<b>9.8</b>	<b>-9.7</b>

The source dataset is available [here](#).

### Main trading partners - EU28

bn €

	EU28 exports to			EU28 imports from			Trade balance	
	Jan-May 15	Jan-May 16	Growth	Jan-May 15	Jan-May 16	Growth	Jan-May 15	Jan-May 16
<b>United States</b>	151.9	148.7	-2%	105.1	103.2	-2%	46.8	45.5
<b>China</b>	68.8	66.7	-3%	139.5	137.0	-2%	-70.7	-70.3
<b>Switzerland</b>	61.9	56.8	-8%	41.4	49.2	19%	20.5	7.6
<b>Russia</b>	28.8	27.4	-5%	59.1	46.1	-22%	-30.3	-18.7
<b>Turkey</b>	33.6	32.6	-3%	25.2	28.1	11%	8.4	4.5
<b>Japan</b>	21.9	22.2	1%	25.1	27.9	11%	-3.2	-5.7
<b>Norway</b>	20.2	19.4	-4%	31.8	24.4	-23%	-11.6	-5.0
<b>South Korea</b>	19.6	17.5	-11%	17.2	17.7	3%	2.4	-0.2
<b>India</b>	16.2	15.4	-5%	17.2	17.1	-1%	-1.0	-1.7
<b>Canada</b>	14.4	14.2	-1%	12.6	11.8	-6%	1.8	2.4

The source dataset is available [here](#).

**Member States' total trade (intra-EU + extra-EU)**
**bn €**

	Total exports						Total imports						Trade balance					
	Total		Intra-EU		Extra-EU		Total		Intra-EU		Extra-EU		Total		Intra-EU		Extra-EU	
	Jan-May 16	Growth / Jan-May 15	Jan-May 16	Growth / Jan-May 15	Jan-May 16	Growth / Jan-May 15	Jan-May 16	Growth / Jan-May 15	Jan-May 16	Growth / Jan-May 15	Jan-May 16	Growth / Jan-May 15	Jan-May 16	Jan-May 15	Jan-May 16	Jan-May 15	Jan-May 16	Jan-May 15
Belgium	145.0	-3%	103.8	-2%	41.2	-4%	135.4	-4%	83.4	-5%	52.0	-3%	9.6	7.5	20.4	18.4	-10.8	-10.9
Bulgaria	9.0	-4%	6.1	4%	2.9	-16%	10.0	-7%	6.7	-1%	3.3	-18%	-1.0	-1.4	-0.6	-0.9	-0.4	-0.5
Czech Republic	61.8	7%	52.1	9%	9.7	1%	52.8	5%	42.0	7%	10.9	-4%	8.9	7.1	10.1	8.8	-1.2	-1.7
Denmark	35.0	-4%	21.7	-3%	13.3	-5%	31.1	-2%	22.5	3%	8.7	-13%	3.9	4.6	-0.8	0.4	4.7	4.2
Germany	497.5	2%	295.8	4%	201.7	-1%	389.8	0%	259.7	2%	130.1	-3%	107.7	101.1	36.1	30.5	71.6	70.5
Estonia	4.8	0%	3.7	0%	1.2	2%	5.6	4%	4.6	7%	1.0	-5%	-0.7	-0.5	-0.9	-0.6	0.2	0.1
Ireland	45.1	1%	23.5	-1%	21.6	3%	25.4	-7%	17.5	-2%	8.0	-17%	19.6	17.3	6.0	6.0	13.6	11.3
Greece	9.9	-8%	5.8	1%	4.1	-19%	17.9	-3%	9.8	1%	8.1	-8%	-8.1	-7.8	-4.0	-4.0	-4.1	-3.8
Spain	107.2	2%	72.0	5%	35.2	-3%	113.8	-1%	70.5	3%	43.3	-6%	-6.6	-9.7	1.5	0.2	-8.0	-9.9
France	187.9	1%	113.8	1%	74.2	0%	215.0	1%	149.9	4%	65.1	-4%	-27.1	-25.7	-36.2	-32.5	9.1	6.8
Croatia	4.7	5%	3.2	6%	1.6	4%	7.8	4%	6.2	5%	1.6	0%	-3.0	-2.9	-3.0	-2.8	0.0	-0.1
Italy	170.2	0%	97.0	3%	73.2	-4%	151.5	-2%	91.4	2%	60.2	-8%	18.7	15.1	5.7	4.0	13.0	11.0
Cyprus	0.7	-22%	0.3	-27%	0.3	-16%	2.5	23%	2.0	35%	0.5	-9%	-1.9	-1.2	-1.7	-1.0	-0.2	-0.2
Latvia	4.2	-4%	3.0	-5%	1.2	-1%	5.0	-6%	4.0	-4%	1.0	-13%	-0.8	-0.9	-1.0	-1.0	0.2	0.1
Lithuania	8.9	-1%	5.5	-3%	3.4	2%	9.8	-4%	6.9	2%	2.9	-16%	-0.9	-1.2	-1.4	-1.1	0.5	-0.1
Luxembourg	6.4	0%	5.3	0%	1.1	5%	7.9	-10%	6.1	-4%	1.8	-26%	-1.5	-2.4	-0.8	-1.0	-0.8	-1.5
Hungary	37.7	4%	31.1	5%	6.6	-2%	34.5	1%	26.7	3%	7.8	-5%	3.2	2.3	4.4	3.8	-1.2	-1.4
Malta	1.0	0%	0.4	2%	0.6	-1%	2.5	10%	1.1	-23%	1.4	64%	-1.5	-1.3	-0.7	-1.0	-0.8	-0.3
Netherlands	205.2	-2%	156.2	-2%	49.0	-4%	181.1	-4%	86.2	2%	94.9	-9%	24.2	21.8	70.0	74.6	-45.8	-52.8
Austria	56.2	1%	39.8	2%	16.4	-1%	57.4	0%	44.4	2%	12.9	-5%	-1.2	-1.6	-4.6	-4.5	3.4	2.9
Poland	73.1	-1%	58.2	-1%	15.0	0%	70.2	-2%	50.5	-1%	19.7	-5%	2.9	2.1	7.7	7.8	-4.8	-5.7
Portugal	20.3	-2%	15.7	4%	4.6	-16%	24.4	-2%	19.1	1%	5.3	-10%	-4.1	-4.1	-3.4	-3.8	-0.6	-0.3
Romania	23.2	4%	17.6	7%	5.6	-5%	27.0	9%	21.0	10%	6.0	4%	-3.8	-2.6	-3.4	-2.7	-0.3	0.2
Slovenia	12.2	4%	9.4	4%	2.8	3%	11.2	1%	7.9	2%	3.3	-2%	1.1	0.7	1.5	1.3	-0.4	-0.6
Slovakia	28.5	4%	24.5	4%	4.1	-1%	27.3	3%	22.0	6%	5.3	-7%	1.2	1.1	2.5	2.7	-1.3	-1.6
Finland	20.8	-7%	12.4	-6%	8.4	-9%	21.9	-2%	16.1	0%	5.7	-7%	-1.1	0.1	-3.8	-2.9	2.7	3.1
Sweden	51.9	0%	31.0	1%	21.0	-2%	51.4	2%	37.0	6%	14.4	-7%	0.6	1.5	-6.0	-4.5	6.6	5.9
United Kingdom	152.5	-11%	73.5	-4%	79.0	-16%	235.1	1%	120.7	-3%	114.4	5%	-82.6	-61.7	-47.2	-47.5	-35.4	-14.2

 The source dataset is available [here](#).

## Geographical information

The **euro area** (EA19) includes Belgium, Germany, Estonia, Ireland, Greece, Spain, France, Italy, Cyprus, Latvia, Lithuania, Luxembourg, Malta, the Netherlands, Austria, Portugal, Slovenia, Slovakia and Finland.

The **European Union** (EU28) includes Belgium, Bulgaria, the Czech Republic, Denmark, Germany, Estonia, Ireland, Greece, Spain, France, Croatia, Italy, Cyprus, Latvia, Lithuania, Luxembourg, Hungary, Malta, the Netherlands, Austria, Poland, Portugal, Romania, Slovenia, Slovakia, Finland, Sweden and the United Kingdom.

## Methods and definitions

Since the introduction of Intrastat for intra-EU trade on 1 January 1993, the value of dispatches has been consistently higher than that of arrivals. In theory, as dispatches are declared FOB and arrivals CIF, the value of arrivals should be slightly higher than that of dispatches. Eurostat uses dispatches as the more reliable measure of total intra-EU trade as, at aggregated levels, total dispatches has better coverage than total arrivals. Due to this divergence in intra-EU trade, and to the difficulties of interpreting figures in absolute terms at the level of individual Member States, trade balances for individual Member States must be interpreted with caution. The same caution applies to the trade balance of the euro area, which includes some intra-EU trade.

National concepts may differ from the harmonised methodology used by Eurostat, leading to differences between figures in this release and those published nationally, both for raw data and for seasonally adjusted series.

Products are classified according to the Standard international trade classification (SITC), Revision 4.

## Revisions and timetable

This News Release is based on data available on 12 July 2016. These are provisional figures based on information provided by Member States. They are subject to frequent revision for up to two years after the month in question.

## For more information

Eurostat website section on international trade in goods

Eurostat database section on international trade in goods

Eurostat Statistics Explained article on international trade in goods statistics


Eurostat €-indicators release calendar

Issued by: **Eurostat Press Office**

**Tim ALLEN**

**Tel: +352-4301-33 444**

**[eurostat-pressoffice@ec.europa.eu](mailto:eurostat-pressoffice@ec.europa.eu)**

 [ec.europa.eu/eurostat/](http://ec.europa.eu/eurostat/)


For further information on data:

**Michele MAROTTA**

**Tel: +352-4301-32 493**

**[estat-etfree@ec.europa.eu](mailto:estat-etfree@ec.europa.eu)**

 [@EU\\_Eurostat](https://twitter.com/EU_Eurostat)

 **Media requests:** Eurostat media support / Tel: +352-4301-33 408 / [eurostat-mediasupport@ec.europa.eu](mailto:eurostat-mediasupport@ec.europa.eu)

## Annex - Seasonally adjusted data

In May 2016 compared with April 2016, **euro area** seasonally adjusted exports decreased by 1.9% and imports by 1.5%. The seasonally adjusted balance was +€24.5 bn, a fall compared with April (+€25.4 bn).

### EA19 trade - seasonally adjusted data

bn €

Flows	Jun 15	Jul 15	Aug 15	Sep 15	Oct 15	Nov 15	Dec 15	Jan 16	Feb 16	Mar 16	Apr 16	May 16
Extra-EA19 exports	170.6	171.0	165.7	165.8	169.0	168.9	171.3	167.5	167.0	168.1	168.7	165.6
Extra-EA19 imports	151.3	149.7	147.7	147.5	148.8	146.8	147.7	146.8	146.9	143.2	143.3	141.1
Extra-EA19 trade balance	19.3	21.3	18.0	18.4	20.2	22.1	23.6	20.7	20.1	24.8	25.4	24.5
Intra-EA19 trade	142.5	142.4	138.5	140.7	141.4	141.5	140.8	140.4	140.1	139.7	139.9	137.3

The source dataset is available [here](#).

In May 2016 compared with April 2016, **EU28** seasonally adjusted exports fell by 1.9% and imports by 3.7%. The seasonally adjusted balance was +€5.6 bn, an increase compared with April (+€3.2 bn).

### EU28 trade - seasonally adjusted data

bn €

Flows	Jun 15	Jul 15	Aug 15	Sep 15	Oct 15	Nov 15	Dec 15	Jan 16	Feb 16	Mar 16	Apr 16	May 16
Extra-EU28 exports	149.6	148.3	146.1	143.4	145.4	146.0	151.0	143.8	142.0	144.2	143.6	140.9
Extra-EU28 imports	145.6	144.4	140.4	140.3	143.4	140.3	139.1	138.1	139.0	140.0	140.4	135.3
Extra-EU28 trade balance	4.0	3.9	5.8	3.0	1.9	5.7	11.9	5.7	2.9	4.2	3.2	5.6
Intra-EU28 trade	257.9	257.3	252.4	255.7	257.5	258.8	256.7	256.1	255.7	254.6	255.8	249.4

The source dataset is available [here](#).

### Contribution of EU28 Member States to extra-EU28 trade - seasonally adjusted data

bn €

	Total exports			Total imports			Trade balance	
	Apr 16	May 16	Growth	Apr 16	May 16	Growth	Apr 16	May 16
<b>EU28</b>	<b>143.6</b>	<b>140.9</b>	<b>-1.9%</b>	<b>140.4</b>	<b>135.3</b>	<b>-3.7%</b>	<b>3.2</b>	<b>5.6</b>
Belgium	8.2	8.2	0.0%	10.4	9.8	-6.0%	-2.2	-1.6
Bulgaria	0.5	0.6	4.7%	0.7	0.7	6.7%	-0.1	-0.1
Czech Republic	2.0	1.9	-1.7%	2.2	2.1	-1.6%	-0.2	-0.2
Denmark	2.8	2.5	-10.7%	1.6	1.7	3.5%	1.1	0.8
Germany	41.1	40.2	-2.2%	25.4	25.5	0.3%	15.7	14.7
Estonia	0.3	0.2	-15.9%	0.2	0.2	-6.5%	0.1	0.0
Ireland	4.5	4.2	-5.4%	1.4	1.6	17.5%	3.1	2.6
Greece	0.9	0.8	-4.3%	2.0	1.5	-25.6%	-1.1	-0.7
Spain	7.2	7.1	-2.2%	8.2	8.4	1.9%	-1.0	-1.3
France	14.9	16.0	8.0%	12.6	12.4	-1.5%	2.3	3.7
Croatia	0.3	0.3	0.3%	0.4	0.4	5.1%	0.0	0.0
Italy	15.6	14.6	-6.7%	11.8	11.6	-1.7%	3.8	2.9
Cyprus	0.1	0.1	-23.2%	0.1	0.1	14.4%	0.0	-0.1
Latvia	0.3	0.3	6.4%	0.2	0.2	17.1%	0.1	0.1
Lithuania	0.7	0.7	0.7%	0.5	0.7	22.5%	0.2	0.1
Luxembourg	0.2	0.2	-9.5%	0.4	0.3	-14.7%	-0.2	-0.1
Hungary	1.4	1.3	-6.2%	1.5	1.5	0.0%	-0.1	-0.2
Malta	0.1	0.2	107.5%	0.3	0.2	-29.5%	-0.2	-0.1
Netherlands	10.6	10.0	-5.3%	19.3	18.7	-3.0%	-8.7	-8.7
Austria	3.4	3.3	-2.3%	2.3	2.5	9.0%	1.1	0.8
Poland	3.2	3.3	3.5%	4.1	3.8	-6.7%	-0.9	-0.6
Portugal	1.0	1.0	0.6%	1.0	1.0	7.1%	0.0	-0.1
Romania	1.2	1.1	-2.4%	1.2	1.3	1.2%	-0.1	-0.1
Slovenia	0.6	0.6	2.0%	0.6	0.6	-3.0%	-0.1	0.0
Slovakia	0.8	0.8	-2.7%	1.1	1.1	2.5%	-0.2	-0.3
Finland	1.7	1.7	3.4%	1.2	1.2	2.3%	0.5	0.5
Sweden	4.2	4.0	-3.5%	2.7	2.9	5.6%	1.4	1.1
United Kingdom	16.1	15.6	-3.0%	26.9	23.0	-14.3%	-10.8	-7.4

The source dataset is available [here](#).

International trade in goods balance, seasonally adjusted, € bn

