

30 November 2017

Income and Living Conditions  
2017 (Provisional data)

---

**The at-risk-of poverty rate declined to 18.3%**

The Survey on Income and Living Conditions held in 2017 on previous year incomes shows that 18.3% of the population was at-risk-of-poverty in 2016, declining from the previous year (19.0%). In 2016 the at-risk-of-poverty rate corresponded to the proportion of inhabitants with an annual net equivalent monetary income below €5,442 in 2016 (€454 a month).

The reduction in the risk of poverty specially concerned people under 18, from 22.4% in 2015 to 20.7% in 2016, and the elderly population from 18.3% to 17.0%. The at-risk-of-poverty rate for the working age adults declined slightly, from 18.2% in 2015 to 18.1% in 2016.

Women continue to be the most affected by the lack of resources: 18.7% compared to 17.8% for men.

The presence of children in a household continues to be associated with a higher risk of poverty (19.7% for households with dependent children and 16.9% for households without dependent children).

In 2016 the highest at-risk-of-poverty rates continued to be estimated for households composed of two adults with three or more dependent children and those of one adult with at least one dependent child (respectively, 41.4% and 33.1%).

The contribution from social transfers related to sickness and disability, family, unemployment, and social inclusion to the reduction of the at-risk-of-poverty rate was 5.3 percentage points (pp) in 2016, i.e. lower than in 2015 (6.1 pp).

There was a slight decrease in income inequality: the Gini Coefficient declined from 33.9% in 2015 to 33.5% in 2016, and the S80/S20<sup>1</sup> share ratio from 5.9 to 5.7.

In 2017, less people were materially deprived (18.0%, in comparison to 19.5% in 2016) and severely materially deprived (6.9%, in comparison to 8.4% in 2016).

---

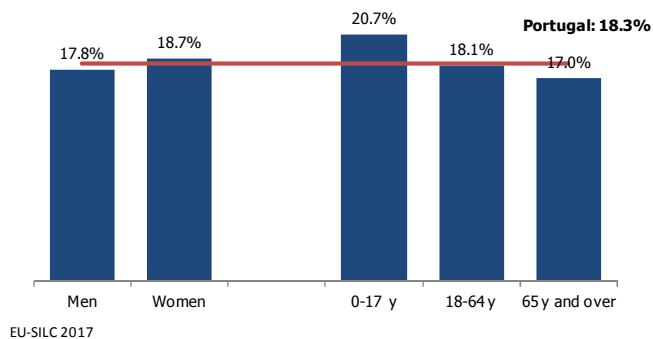
<sup>1</sup> Ratio of the total income received by the 20% of the population with the highest incomes (top quintile) to that received by the 20% of the population with the lowest incomes (lowest quintile).

### 18.3% of population at-risk-of-poverty in 2016

The Survey on Income and Living Conditions (EU-SILC) held annually with Portuguese resident households showed that 18.3% of people were at-risk-of-poverty in 2016, 0.7 pp less than in 2015.

The survey also shows that, in nominal terms, the median equivalent monetary disposable income increase by 3.3% between 2015 and 2016: 9,070 euro in 2016 compared to 8,782 euro in the previous year. Consequently, the at-risk-of-poverty threshold, or relative at-risk-of-poverty line, that corresponds to 60% of the median of the equivalent monetary disposable income distribution, increased from 5,269 euro to 5,442, i.e. from 439 euro to 454 euro on a monthly basis.

At-risk-of-poverty rate by sex and age group, Portugal 2016



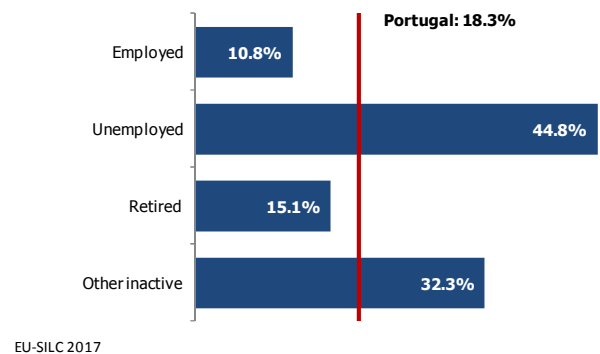
The reduction in the risk of poverty specially concerned people under 18, from 22.4% in 2015 to 20.7% in 2016, and the elderly population from 18.3% to 17.0%. The at-risk-of-poverty rate for the working age adults declined slightly, from 18.2% in 2015 to 18.1% in 2016.

In 2016, the risk of poverty mainly decreased for women (-0.9 pp vis-à-vis -0.4 pp for men), but women continue to be the most affected by the lack of resources: 18.7% compared to 17.8% for men.

### There was a decrease in the risk of poverty for the retired

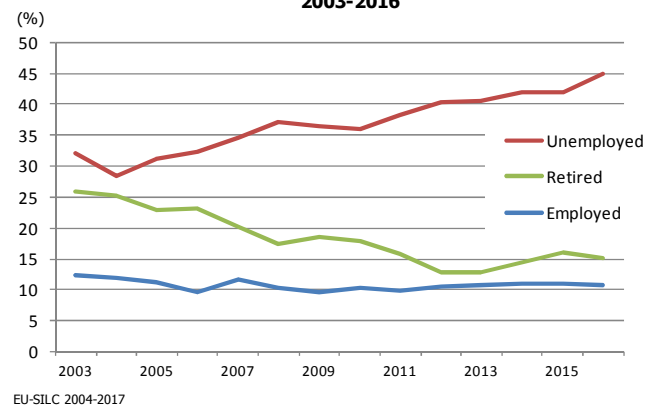
The at-risk-of-poverty rate for the retired population was 15.1% in 2016, i.e. 0.9 pp lower than in the previous year (16.0%).

At-risk-of-poverty rate by activity status, Portugal 2016



On the other hand, the at-risk-of-poverty rate for the employed population was 10.8% in 2016, less 0.1 pp than in 2015 (10.9%).

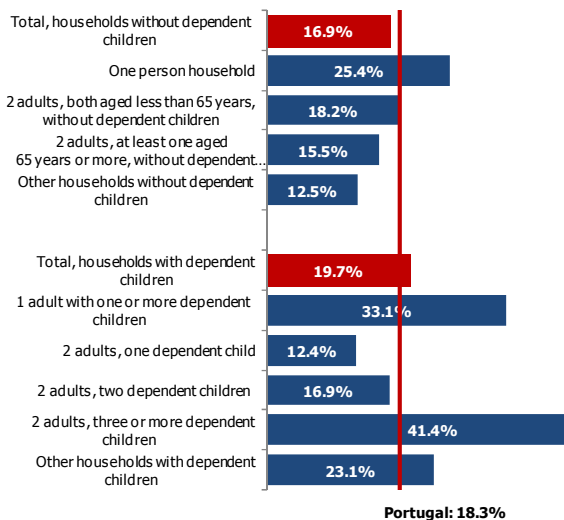
At-risk-of-poverty rate by activity status, Portugal 2003-2016



Despite a reduction of 11.4% in the unemployed population between 2015 and 2016, the increase in the at-risk-of-poverty threshold resulted in an increase in the at-risk-of-poverty for the unemployed population in the same period: from 42.0% in 2015 to 44.8% in 2016.

## Households composed by one adult with dependent children and those composed of two adults with three or more dependent children were the most affected by poverty

At-risk-of-poverty rate by household type, Portugal 2016



EU-SILC 2017

The at-risk-of-poverty rate of households with dependent children decreased 1.3 pp between 2015 and 2016, while the at-risk-of-poverty rate of households without dependent children slightly increased in the same period (0.1 pp). However, the presence of children in a household continues to be associated with a higher risk of poverty (19.7% for households with dependent children and 16.9% for households without dependent children).

As in previous years, the highest at-risk-of-poverty rates were estimated for households composed of one adult with at least one dependent child (33.1%) and those composed of two adults with three or more dependent children (41.4%). The at-risk-of-poverty rate for households composed of three or more adults with dependent children was 23.1%.

## The contribution of social transfers to the reduction of the at-risk-of-poverty rate reduced to 5.3 pp in 2016

Considering only income from employment, propriety and capital property income and private transfers, 45.2% of Portuguese residents would be at-risk-of-poverty in 2016. Also in that year, income from retirement and survivors' pensions contributed to a 21.6 pp decrease in the at-risk-of-poverty rate, thus resulting in an at-risk-of-poverty rate after pensions and before social transfers of 23.6%.

At-risk-of-poverty (%) considering social transfers, Portugal, 2013-2016

Income reference year	Unit: %			
	2013	2014	2015	2016 (Po)
After pensions and social transfers	19.5	19.5	19.0	18.3
After pensions and before social transfers	26.7	26.4	25.0	23.6
Before pensions and social transfers	47.8	47.5	46.1	45.2
<b>EU-SILC</b>	<b>2014</b>	<b>2015</b>	<b>2016</b>	<b>2017 (Po)</b>

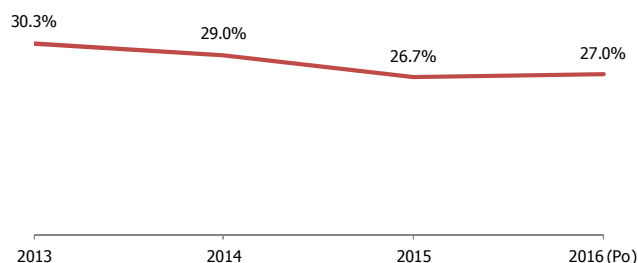
(Po) provisional data  
EU-SILC

The contribution from social transfers related to sickness and disability, family, unemployment, and social inclusion to the reduction of the at-risk-of-poverty rate was 5.3 pp in 2016, i.e. with a new decline from the previous year (7.2 pp in 2013, 6.9 pp in 2014 and 6.1 pp in 2015).

## The lack of resources of the population at-risk-of-poverty increased in 2016

The relative median at-risk-of-poverty gap, which measures, as a percentage, the lack of resources of the population at-risk-of-poverty, was 27.0% in 2016, plus 0.3 pp than in the previous year (26.7%), however lower than values for 2013 (30.3%) and 2014 (29.0%).

**Relative median at-risk-of-poverty gap (60% of median), Portugal 2013-2016**



EU-SILC 2014-2017

**The inequality in income distribution slightly decreased**

In 2016, according to the S80/S20 ratio, the net equivalent monetary income received by the 20% of the population with the highest income was 5.7 times the net equivalent monetary income received by the 20% of the population with the lowest income, decreasing from 2015 (5.9).

The S90/S10 ratio, which is the ratio of the net equivalent monetary income received by the 10% of the population with the highest income to that received by the 10% of the population with the lowest income, was 10.0, i.e. 0.1 pp less compared to the previous year (10.1).

**Indicators on income inequality, Portugal, 2013-2016**

Income reference year	2013	2014	2015	2016 (Po)
Gini coefficient (%)	34.5	34.0	33.9	33.5
S80/S20 (no.)	6.2	6.0	5.9	5.7
S90/S10 (no.)	11.1	10.6	10.1	10.0
<b>EU-SILC</b>	<b>2014</b>	<b>2015</b>	<b>2016</b>	<b>2017 (Po)</b>

(Po) provisional data

EU-SILC

The Gini Coefficient takes into account the entire income distribution, reflecting income differences across all population groups, and not only those with the highest and lowest incomes. In 2016 this indicator stood at 33.5%, declining from the previous year.

Income and Living Conditions – 2017 (Provisional data)

**There are less people in material deprivation in 2017**

Material deprivation indicators are based on a set of nine items related to the economic and durable goods needs of households, listed in the methodological note. Three distinct indicators are calculated:

- The general indicator of material deprivation, corresponding to situations where there is not access to at least three of these nine items due to economic difficulties;
- The severe material deprivation indicator, corresponding to situations where there is not access to at least four of the nine items due to the same type of reasons;
- The intensity of material deprivation, i.e. the average number of items lacking this materially deprived population.

**Indicators on material deprivation, Portugal, 2014-2017**

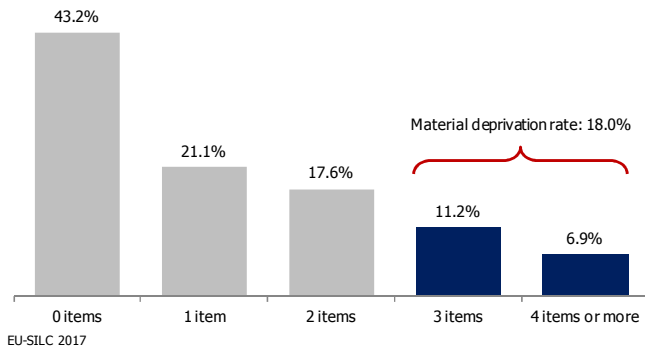
Data reference year	2014	2015	2016	2017 (Po)
Material deprivation rate (%)	25.7	21.6	19.5	18.0
Severe material deprivation rate (%)	10.6	9.6	8.4	6.9
Intensity of material deprivation (no.)	3.6	3.7	3.6	3.6
<b>EU-SILC</b>	<b>2014</b>	<b>2015</b>	<b>2016</b>	<b>2017 (Po)</b>

(Po) provisional data

EU-SILC

In 2017, 18.0% of Portuguese residents were materially deprived, and 6.9% were severely materially deprived, maintaining the tendency for decline of the two series.

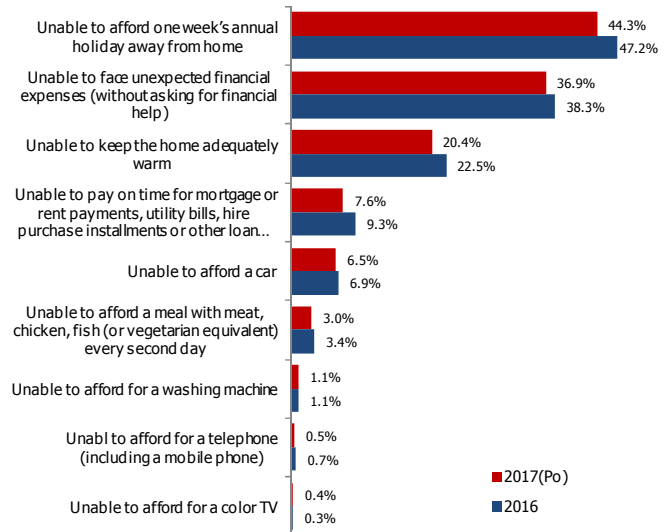
**Proportion of resident population by number of lacking material deprivation items, Portugal 2017**



In 2017, for most of the nine items considered, the proportion of residents reporting economic difficulties declined, in particular:

- 44.3% of people lived in households unable to afford one week’s annual holiday away from home (47.2% in 2016 and 51.3% in 2015);
- 36.9% of people lived in households unable to face unexpected financial expenses corresponding to the monthly national at-risk-of-poverty threshold (38.3% in 2016 and 40.7% in 2015);
- 20.4% of people lived in households unable to keep the home adequately warm (22.5% in 2016 and 23.8% in 2015);
- 7.6% of people lived in households with arrears on mortgage or rent payments, utility bills, hire purchase instalments, or other loan payments (9.3% in 2016 and 10.1% in 2015).

**Items of material deprivation for the total population, Portugal 2016 e 2017**



## 2.4 million people at-risk-of-poverty or social exclusion

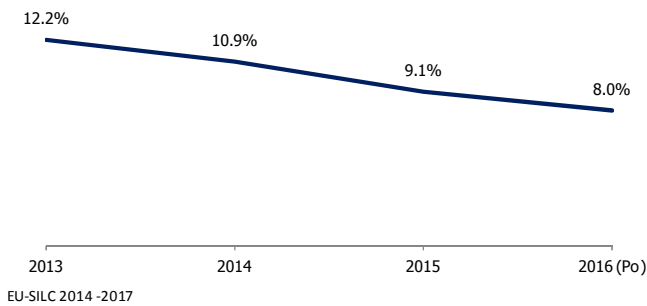
Europe 2020, the European Union’s growth strategy for this decade, defines, among other objectives, a reduction of at least 20 million of the number of people at-risk-of-poverty or social exclusion in the European Union by 2020.

Within this scope, an indicator was set out regarding the population at-risk-of-poverty or social exclusion, joining the concepts of relative at-risk-of-poverty rate – people with an annual equivalent income below the poverty threshold – and severe material deprivation with the concept of very low per capita labour intensity.

People with very low labour intensity are those aged less than 60 who, in the income reference period, lived in households where adults aged 18-59 (excluding students) worked on average less than 20% of the labour potential.

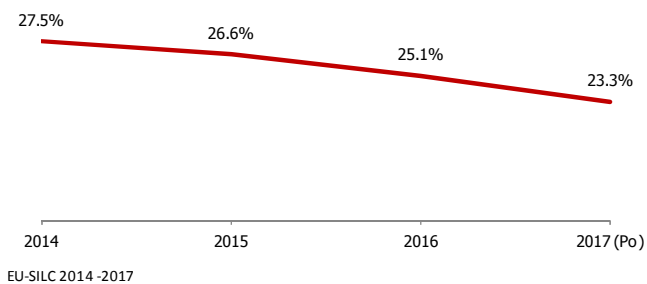
The share of the population aged less than 60 living in households with a very low per capita labour intensity was 8.0% in 2016 (1.1 pp less than in 2015 and 4.2 pp less than in 2013).

**Very low per capita labour intensity, Portugal 2013-2016**



According to the survey held in 2017, 2,399 thousand people are at-risk-of-poverty or social exclusion (people at-risk-of-poverty or living in households with a very low per capita labour intensity or severely materially deprived). Hence, 23.3% of the population is at-risk-of-poverty or social exclusion, i.e. 1.8 pp less than in the previous year.

**Population at-risk-of-poverty or social exclusion, Portugal 2014-2017**



Note:

### On the at-risk-of-poverty threshold anchored at a fixed moment in time

Since the at-risk-of-poverty rate is an indicator that by definition only considers the distribution of net monetary income in each year, it is thus conditioned by changes in median income.

Complementarily, an at-risk-of-poverty threshold anchored at 2009 values was calculated and updated in the seven following years based on the rate of change in the consumer price index.

### At-risk-of-poverty threshold anchored at 2009 and at-risk-of-poverty rate (%), Portugal, EU-SILC 2010-2017

Income reference data	2009	2010	2011	2012	2013	2014	2015	2016 (Po)
At-risk-of-poverty threshold anchored at 2009	5,207€	5,280€	5,473€	5,624€	5,639€	5,624€	5,651€	5,686€
<b>At-risk-of-poverty ratea (%):</b>								
Total	17.9	19.6	21.3	24.7	25.9	24.1	21.8	21.1
0-17 y	22.4	23.9	26.1	30.9	31.1	28.3	24.5	22.3
18-64 y	15.7	17.7	20.3	23.7	24.6	23.1	20.6	19.5
65 y and over	21.0	21.6	19.8	22.4	25.5	24.0	23.1	19.9
EU-SILC	2010	2011	2012	2013	2014	2015	2016	2017 (Po)

(Po) provisional data

EU-SILC

With an at-risk-of-poverty threshold anchored at 2009 levels, there was a noticeable increase in the share of people at-risk-of-poverty over the period under analysis, from 17.9% in 2009 to 21.1% in 2016. The indicator registered a maximum of 25.9% in 2013 and a decline in the three most recent years: 24.1% in 2014, 21.8% in 2015 and 21.1% in 2016.

The analysis of at-risk-of-poverty rates anchored in 2009 by age group shows that the working age population was the most severely penalized in income terms over the 8 years under review: 19.5% in 2016, i.e. 3.8 pp higher than the initial year. For children, a similar figure to 2009 was recorded in 2016, while for the elderly population there was an improvement of 1.1 pp.

## Annex

### Monetary poverty and inequality indicators, Portugal, EU-SILC 2014-2017

Income reference year	unit	2013	2014	2015	2016 (Po)
<b>At-risk-of-poverty threshold</b>	€	4,937€	5,061€	5,269€	5,442€
<b>At-risk-of-poverty rate (60% of the median)</b>					
Before pensions and social transfers	%	47.8	47.5 Rc	46.1	45.2
After pensions and before social transfers	%	26.7	26.4	25.0	23.6
After pensions and social transfers	%	19.5	19.5	19.0	18.3
<b>Dispersion around the at-risk-of-poverty threshold</b>					
After pensions and social transfers (70% of the median)	%	27.1	27.0	26.4	25.4
After pensions and social transfers (50% of the median)	%	13.8	13.8	13.0	12.4
After pensions and social transfers (40% of the median)	%	8.6	8.5	7.3	7.5
<b>Income inequality indicators</b>					
Gini coefficient	%	34.5	34.0	33.9	33.5
Inequality of income distribution (S80/S20)	n.º	6.2	6.0	5.9	5.7
Inequality of income distribution (S90/S10)	n.º	11.1	10.6	10.1	10.0
<b>EU-SILC</b>		<b>2014</b>	<b>2015</b>	<b>2016</b>	<b>2017 (Po)</b>

P<sub>o</sub> - Provisional data

Rc - Rectified value

Survey on Income and Living Conditions (ICOR; EU-SILC)



## At-risk-of-poverty rate (60% of the median) by gender and age group, Portugal, EU-SILC 2014-2017

Unit: %

Income reference year	2013				2014				2015				2016 (Po)			
	Total	0 - 17 years	18 - 64 years	65 + years	Total	0 - 17 years	18 - 64 years	65 + years	Total	0 - 17 years	18 - 64 years	65 + years	Total	0 - 17 years	18 - 64 years	65 + years
<b>After pensions and social transfers <sup>(1)</sup></b>																
Total	19.5	25.6	19.1	15.1	19.5	24.8	18.8	17.0	19.0	22.4	18.2	18.3	18.3	20.7	18.1	17.0
Men	18.9	25.2	18.7	12.6	18.8	23.9	18.6	14.2	18.2	21.2	18.0	16.0	17.8	20.6	17.8	15.2
Women	20.0	26.1	19.5	16.9	20.1	25.8	18.9	19.0	19.6	23.7	18.4	19.9	18.7	20.8	18.4	18.3
<b>After pensions and before social transfers <sup>(2)</sup></b>																
Total	26.7	33.6	27.4	18.5	26.4	31.3	27.0 Rc	20.2	25.0	28.6	25.2	21.4	23.6	25.5	24.4	20.0
Men	26.5	34.1	27.1	15.9	26.0	30.1	27.1	17.8	24.4	27.2	25.1	19.3	23.4	26.0	24.2	18.1
Women	26.9	33.1	27.7	20.3	26.8	32.6	27.0	22.0	25.6	30.1	25.4	22.9	23.8	25.0	24.5	21.4
<b>Before pensions and social transfers <sup>(3)</sup></b>																
Total	47.8	36.5	37.9	88.9	47.5 Rc	34.5 Rc	37.3 Rc	89.7 Rc	46.1	31.6	35.6	89.8	45.2	29.0	34.4	90.0
Men	46.1	37.2	36.8	90.0	45.4 Rc	33.3 Rc	36.5 Rc	90.0 Rc	44.1	30.2	34.9	90.3	43.4	29.6	33.8	89.9
Women	49.3	35.8	38.8	88.2	49.4 Rc	35.7	38.1 Rc	89.6 Rc	48.0	33.2	36.3	89.5	46.8	28.3	35.0	90.1
<b>EU-SILC</b>	<b>2014</b>				<b>2015</b>				<b>2016</b>				<b>2017 (Po)</b>			

P<sub>o</sub> - Provisional data

Rc - Rectified value

Survey on Income and Living Conditions (ICOR; EU-SILC)

<sup>(1)</sup> Include wages and salaries, self-employment, property and capital income, pensions from individual private or public plans and other social transfers (relative to family, education, housing, sickness/disability, unemployment and social inclusion benefits).

<sup>(2)</sup> Include wages and salaries, self-employment, property and capital income and pensions from individual private or public plans, but excludes all others social transfers.

<sup>(3)</sup> Include wages and salaries, self-employment, property and capital income.

## At-risk-of-poverty rate (60% of the median), after social transfers, by household type, Portugal, EU-SILC 2014-2017

Unit: %

Income reference year	2013	2014	2015	2016 (Po)
<b>Total, households without dependent children</b>	<b>15.8</b>	<b>16.6</b>	<b>16.8</b>	<b>16.9</b>
One person household	23.1	25.4	26.3	25.4
<i>One person household less than 65 years</i>	<i>23.8</i>	<i>23.7</i>	<i>23.9</i>	<i>25.0</i>
<i>One person household aged 65 years or more</i>	<i>22.5</i>	<i>26.8</i>	<i>28.1</i>	<i>25.6</i>
2 adults, both aged less than 65 years, without dependent children	17.4	16.8	16.0	18.2
2 adults, at least one aged 65 years or more, without dependent children	13.1	14.3	16.4	15.5
Other households without dependent children	13.1	13.7	12.8	12.5
<b>Total, households with dependent children</b>	<b>23.0</b>	<b>22.2</b>	<b>21.0</b>	<b>19.7</b>
1 adult with one or more dependent children	38.4	34.6	31.6	33.1
2 adults, one dependent child	15.4	13.7	15.0	12.4
2 adults, two dependent children	18.0	20.4	17.0	16.9
2 adults, three or more dependent children	38.4	37.7	42.7	41.4
Other households with dependent children	28.8	26.1	24.7	23.1
<b>EU-SILC</b>	<b>2014</b>	<b>2015</b>	<b>2016</b>	<b>2017 (Po)</b>

P<sub>o</sub> - Provisional data

**Note:** In EU-SILC "dependent children" correspond to all individuals aged under 18 years old, as well as the individuals aged between 18-24 years old but economically dependent.

### Survey on Income and Living Conditions (ICOR; EU-SILC)

## At-risk-of-poverty rate (60% of the median), after social transfers, by activity status and sex, Portugal, EU-SILC 2014-2017

Unit: %

Income reference year	2013			2014			2015			2016 (Po)		
	Total	Men	Women	Total	Men	Women	Total	Men	Women	Total	Men	Women
<b>Employed</b>	<b>10.7</b>	<b>11.5</b>	<b>9.9</b>	<b>10.9</b>	<b>11.6</b>	<b>10.2</b>	<b>10.9</b>	<b>11.3</b>	<b>10.5</b>	<b>10.8</b>	<b>11.2</b>	<b>10.4</b>
<b>Not Employed</b>	<b>24.7</b>	<b>23.6</b>	<b>25.5</b>	<b>25.2</b>	<b>24.3</b>	<b>26.0</b>	<b>25.4</b>	<b>24.5</b>	<b>26.1</b>	<b>25.1</b>	<b>24.6</b>	<b>25.5</b>
Unemployed	40.5	41.5	39.6	42.0	44.1	39.7	42.0	44.5	39.4	44.8	47.1	42.5
Retired	12.9	12.4	13.4	14.4	13.5	15.2	16.0	15.6	16.3	15.1	14.5	15.6
Other inactive	32.4	29.4	33.8	31.9	27.7	33.9	31.2	26.0	33.5	32.3	32.1	32.4
<b>EU-SILC</b>	<b>2014</b>	<b>2015</b>	<b>2016</b>	<b>2017 (Po)</b>								

P<sub>o</sub> - Provisional data

**Note:** In the activity status indicators it was considered the total population aged 18 years and over.

### Survey on Income and Living Conditions (ICOR; EU-SILC)

### Relative median at-risk-of-poverty gap (60% of the median) by sex and age group, Portugal, EU-SILC 2014-2017

Unit: %

Income reference year	2013				2014				2015				2016 (Po)			
	Total	0 - 17 years	18 - 64 years	65 + years	Total	0 - 17 years	18 - 64 years	65 + years	Total	0 - 17 years	18 - 64 years	65 + years	Total	0 - 17 years	18 - 64 years	65 + years
Total	30.3	32.7	32.7	20.6	29.0	31.4	32.2	18.2	26.7	28.7	29.3	18.0	27.0	30.2	30.2	15.3
Men	31.2	32.7	32.7	19.7	30.1	30.9	33.6	17.2	27.1	29.1	29.2	16.6	27.4	28.6	30.7	14.3
Women	29.3	32.7	32.7	21.3	28.7	32.1	31.5	19.3	26.5	26.9	29.4	19.1	26.5	32.6	29.9	15.7
<b>EU-SILC</b>	<b>2014</b>				<b>2015</b>				<b>2016</b>				<b>2017 (Po)</b>			

P<sub>o</sub> - Provisional data Survey on Income and Living Conditions (ICOR; EU-SILC)

### Indicators on material deprivation, Portugal, EU-SILC 2014-2017

Data reference year	unit	2014	2015	2016	2017 (Po)
Material deprivation rate	%	25.7	21.6	19.5	18.0
Severe material deprivation rate	%	10.6	9.6	8.4	6.9
Intensity of material deprivation	n.º	3.6	3.7	3.6	3.6
<b>EU-SILC</b>		<b>2014</b>	<b>2015</b>	<b>2016</b>	<b>2017 (Po)</b>

(Po) provisional data Survey on Income and Living Conditions (ICOR; EU-SILC)

### Material deprivation rate by gender and age group, Portugal, EU-SILC 2014-2017

Unit: %

Data reference year	2014				2015				2016				2017 (Po)			
	Total	0 - 17 years	18 - 64 years	65 + years	Total	0 - 17 years	18 - 64 years	65 + years	Total	0 - 17 years	18 - 64 years	65 + years	Total	0 - 17 years	18 - 64 years	65 + years
Total	25.7	27.4	25.3	25.2	21.6	22.3	21.2	22.2	19.5	19.7	19.7	18.9	18.0	17.8	17.5	19.8
Men	24.6	26.9	24.9	21.0	21.0	23.3	20.9	18.8	18.6	19.3	19.1	15.9	17.4	17.6	17.5	17.1
Women	26.6	27.9	25.7	28.2	22.1	21.1	21.5	24.5	20.3	20.0	20.1	21.1	18.6	18.0	17.5	21.8
<b>EU-SILC</b>	<b>2014</b>				<b>2015</b>				<b>2016</b>				<b>2017 (Po)</b>			

(Po) provisional data Survey on Income and Living Conditions (ICOR; EU-SILC)

## Items of material deprivation for the total population, Portugal, EU-SILC 2016-2017

Unit: %

Data reference year	2016	2017(Po)
Unable to afford one week's annual holiday away from home	47.2	44.3
Unable to face unexpected financial expenses (without asking for financial help)	38.3	36.9
Unable to keep the home adequately warm	22.5	20.4
Unable to pay on time for mortgage or rent payments, utility bills, hire purchase installments or other loan payments	9.3	7.6
Unable to afford a car	6.9	6.5
Unable to afford a meal with meat, chicken, fish (or vegetarian equivalent) every second day	3.4	3.0
Unable to afford for a washing machine	1.1	1.1
Unabl to afford for a telephone (including a mobile phone)	0.7	0.5
Unable to afford for a color TV	0.3	0.4
<b>EU-SILC</b>	<b>2016</b>	<b>2017(Po)</b>

(Po) provisional data

**Survey on Income and Living Conditions (ICOR; EU-SILC)**

## EUROPE 2020 indicators, Portugal, EU-SILC 2014-2017

Unit: %

Survey year	2014	2015	2016	2017 (Po)
At-risk-of-poverty rate after social transfers	19.5	19.5	19.0	18.3
Severe material deprivation rate	10.6	9.6	8.4	6.9
Very low per capita work intensity	12.2	10.9	9.1	8.0
People at-risk-of poverty or social exclusion	27.5	26.6	25.1	23.3
<b>EU-SILC</b>	<b>2014</b>	<b>2015</b>	<b>2016</b>	<b>2017 (Po)</b>

P<sub>o</sub> - Provisional data

**Note:** By convention, data refers to the survey year. The indicator Resident population at-risk-of-poverty or social exclusion combines two indicators based on the income reference year (At-risk-of-poverty rate after pensions and social transfers and Very low per capita work intensity) with one indicator based on the survey year (Severe material deprivation rate).

### Survey on Income and Living Conditions (ICOR; EU-SILC)

## People at-risk-of poverty or social exclusion by sex and age group, Portugal, EU-SILC 2014-2017

Unit: %

Data reference year	2014				2015				2016				2017 (Po)			
	Total	0 - 17 years	18 - 64 years	65 + years	Total	0 - 17 years	18 - 64 years	65 + years	Total	0 - 17 years	18 - 64 years	65 + years	Total	0 - 17 years	18 - 64 years	65 + years
Total	27.5	31.4	28.3	21.1	26.6	29.6	27.4	21.7	25.1	27.0	25.6	21.8	23.3	24.2	23.9	20.7
Men	26.7	31.2	27.9	17.6	25.9	29.1	27.1	18.2	24.1	25.7	25.1	18.9	22.5	23.9	23.4	18.1
Women	28.1	31.7	28.8	23.6	27.3	30.0	27.7	24.3	26.0	28.4	26.1	24.0	24.0	24.5	24.4	22.6
<b>EU-SILC</b>	<b>2014</b>				<b>2015</b>				<b>2016</b>				<b>2017 (Po)</b>			

P<sub>o</sub> - Provisional data

**Note:** By convention, data refers to the survey year. The indicator Resident population at-risk-of-poverty or social exclusion combines two indicators based on the income reference year (At-risk-of-poverty rate after pensions and social transfers and Very low per capita work intensity) with one indicator based on the survey year (Severe material deprivation rate).

### Survey on Income and Living Conditions (ICOR; EU-SILC)

## Methodological note

The indicators shown in this press release are provisional, reflecting an anticipation of the overall set of indicators to be released in liaison with Eurostat next year.

The indicators were based on the net annual monetary income of households in the year (2016) previous to survey data collection year. Non monetary income sources, namely wages in kind, self-consumption and imputed rents associated with owner occupation are excluded.

As to reflect the differences in the size and composition of households, net income was transformed into equivalent income using the OECD-modified equivalence scale. Equivalent income is obtained by dividing the net income of each household by its size in number of adult equivalents and their value assigned to each household member.

Data on material deprivation refer to the survey data collection year (2017).

**At-risk-of-poverty rate:** percentage of the population with an equivalent income lower than the at-risk-of-poverty threshold, which is defined as 60% of the median equivalent income.

**At-risk-of-poverty threshold:** Income threshold under which a household is considered to be living in risk of poverty. It was conventionalised by the European Commission as 60% of the median national equivalent income.

**Equivalent income:** the result of the division of the household's disposable income by its size in terms of "equivalent adults". Note: "Equivalent adults" is a unit resulting from the application of the OECD modified scale.

**Gini coefficient:** Inequality income distribution indicator aiming at transmitting in one sole value the asymmetry of that distribution, with values between 0 (everyone having exactly the same income) and 100 (one person has all the income, while everyone else has zero income).

**Household net disposable income:** Total monetary net annual income of a household from all sources: wages and salaries, self-employment and capital income, public and private transfers and other income sources, net of income taxes and social security contributions.

**Intensity of material deprivation:** Mean of items of material deprivation lacked by the population in material deprivation.

**Low per capita labour intensity:** Population aged less than 60 who, in the income reference period, lived in households where adults aged 18-59 (excluding students) worked on average less than 20% of the labour potential.

**Material deprivation rate:** percentage of population with an enforced lack of at least three out of the following nine items, due to economic difficulties: a) capacity to face unexpected financial expenses (without asking for financial help); b) capacity to afford paying for one week's annual holiday away from home, paying travel and accommodation costs for all household members; c) capacity to pay on time for mortgage or rent payments, utility bills, hire purchase installments or other loan payments; d) capacity to afford a meal with meat, chicken, fish (or vegetarian equivalent) every second day; e) capacity to pay for keeping its home adequately warm; f) capacity to afford for a washing machine; g) capacity to afford for a color TV; h) capacity to afford for a telephone (including a mobile phone); i) capacity to afford a car.

**Modified OECD equivalence scale:** an equivalence scale that assigns a weight of 1.0 to the first household member aged 14 or over, 0.5 to each additional member aged 14 or more and 0.3 to each member aged less than 14 years old. The use of this scale accounts for differences in size and age composition among households.

**Population at-risk-of-poverty or social exclusion:** population at-risk-of-poverty or living in households with a very low per capita labour intensity or severely materially deprived.

**Relative median at-risk-of-poverty gap:** corresponds to the difference between the poverty threshold and the median income of at-risk-of poverty population in percentage.

**S80/S20 Ratio:** Inequality income distribution indicator defined as the ratio of the total income received by the 20% of the population with the highest incomes (top quintile) to that received by the 20% of the population with the lowest incomes (lowest quintile).

**S90/S10 Ratio:** Inequality income distribution indicator defined as the ratio of the total income received by the 10% of the population with the highest incomes (top decile) to that received by the 10% of the population with the lowest incomes (lowest decile).

**Severe material deprivation rate:** percentage of population with an enforced lack of at least four out of the same nine items considered in the material deprivation rate.

**Social transfers (except pensions):** Include social transfers related to family, education, housing, sickness and disability, unemployment, and social exclusion.

**The Inquérito às Condições de Vida e Rendimento das Famílias (EU-SILC) has been held in Portugal since 2004, within the framework of specific EU legislation (Regulation (EC) No 1177/2003), establishing a common EU program for the systematic production of statistics on poverty, deprivation, and social exclusion.**

In Portugal, data are collected on an annual basis through Computer Assisted Personal Interviews (CAPI). The questionnaire includes questions on the household and also on each member's personal characteristics, particularly on the income of all members aged 16 and over. In 2017 the Survey was addressed to 14,053 households, of which 12,093 with a complete interview (data was collected on 30,012 persons; 25,852 aged 16 and over). Fieldwork usually takes place in the second quarter of each year.

This survey aims to obtain results for all those residing in Portuguese territory in the reference period. For income, this reference period corresponds to the year prior to that when interviews are carried out.

Households are selected by stratified two-stage sampling, from a sampling frame of dwellings of usual residence. The longitudinal nature of the sample, as well as the limitation of the statistical burden on respondents, are ensured by setting up an annual rotational scheme involving four independent sub-samples, each one being replaced every year. Hence, each household is interviewed four times at most, and thus the overlapping of  $\frac{3}{4}$  of respondents vis-à-vis the previous year is guaranteed.

Up to 2012 the sample was selected exclusively from the Master Sample. However, from 2013 onwards a gradual transition of the latter to the new sampling frame was initiated (based on the National Dwellings Register – FNA in Portuguese). This transition took place over four years: between 2013 and 2015 dwellings selected from both sampling frames co-existed in the sample. As from 2016, the Survey annual sample, i.e. all four sub-samples is selected from the sampling frame based on the National Dwellings Register.

Sampling selection follows a NUTS 2 stratified multistage sampling design, with primary sampling units (INSPIRE grid cells of 1km<sup>2</sup>) being selected with probability proportional to the number of dwellings of usual residence, and secondary sampling units (dwellings) selected systematically in each primary sampling unit. All households and individuals residing in the selected dwellings are interviewed.

The estimated results are obtained using household and individual weights, calibrated by region, household size, age, and sex.