

Implicit interest rates in housing loans

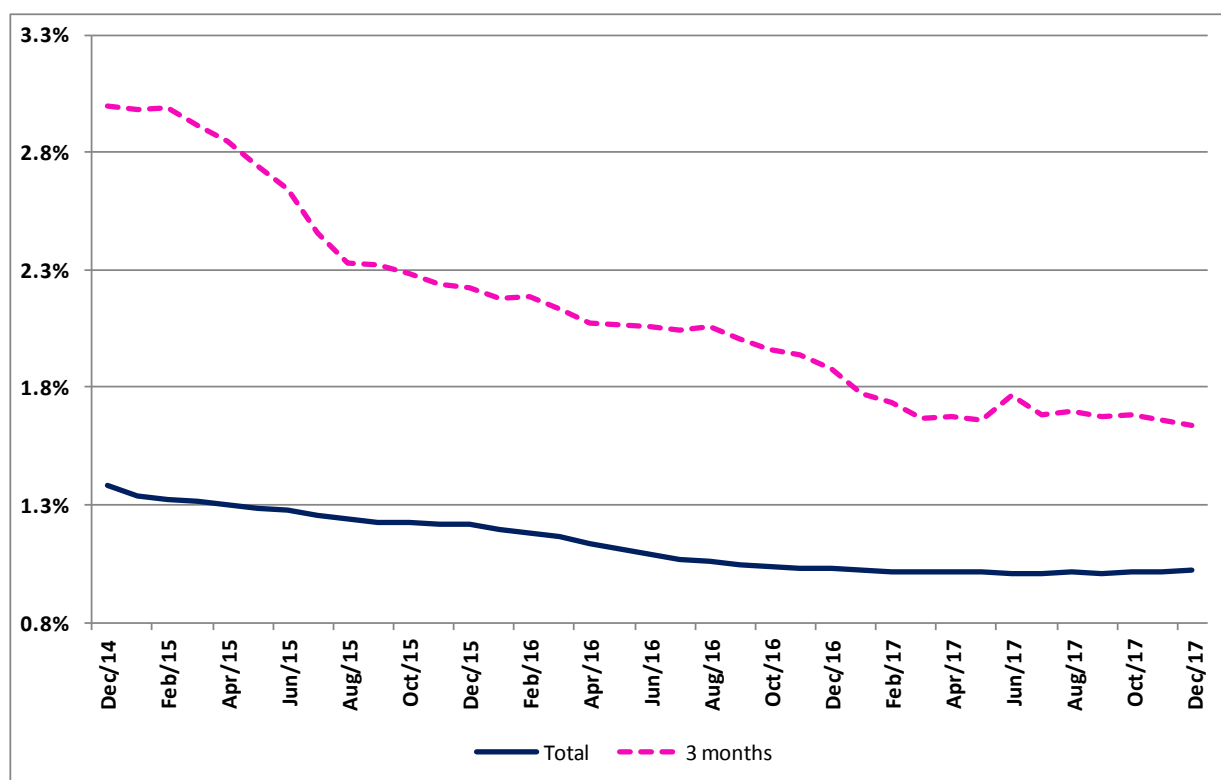
December 2017

Interest rate increased 0.2 basis points

The implicit interest rate for all housing loan agreements¹ increased from 1.017% in November to 1.019% in December. The average of mortgage owed capital increased €44 from the previous month, reaching €51,690. The average value of loan repayment was 239 Euros, the same as in the previous month.

For 2017, the average annual interest rate for total mortgage loans was 1.120%, down by 7.9 basis points from the previous year. The average mortgage owed capital diminished €224 in 2017 to €51,572, when compared to 2016, while the average value of loans repayments stood at €238.

Implicit interest rates in housing loans (%)



¹ Additional details on how these statistics are compiled are available from the Implicit interest rates in housing loans methodology, which can be downloaded from <http://smi.ine.pt/UploadFile/Download/542>. This methodology is only available in Portuguese.

Monthly Average

Period	Total		3 months	
		from which Housing Acquisition		from which Housing Acquisition
Implicit interest rates in housing loans (%)				
Dec/16	1.028%	1.043%	1.879%	1.857%
Jan/17	1.025%	1.041%	1.771%	1.746%
Feb/17	1.018%	1.033%	1.732%	1.696%
Mar/17	1.016%	1.031%	1.665%	1.628%
Apr/17	1.012%	1.028%	1.675%	1.646%
May/17	1.012%	1.030%	1.660%	1.624%
Jun/17	1.007%	1.027%	1.766%	1.752%
Jul/17	1.009%	1.029%	1.681%	1.673%
Aug/17	1.014%	1.035%	1.696%	1.687%
Sep/17	1.009%	1.031%	1.677%	1.668%
Oct/17	1.016%	1.038%	1.686%	1.681%
Nov/17	1.017%	1.039%	1.660%	1.658%
Dec/17	1.019%	1.041%	1.634%	1.631%
Average of owed capital (Euros)				
Dec/16	51,547	58,148	86,462	93,603
Jan/17	51,554	58,146	87,578	94,447
Feb/17	51,615	58,219	89,219	96,306
Mar/17	51,537	58,166	91,215	98,175
Apr/17	51,512	58,118	89,805	96,757
May/17	51,535	58,021	89,359	96,640
Jun/17	51,532	57,963	90,884	97,668
Jul/17	51,592	58,046	92,052	98,565
Aug/17	51,560	58,019	92,714	99,643
Sep/17	51,521	57,965	94,003	100,242
Oct/17	51,571	58,017	95,520	101,960
Nov/17	51,646	58,121	93,526	99,909
Dec/17	51,690	58,188	93,788	100,034
Loan Prepayments (Euros)				
Dec/16	237	257	301	325
Jan/17	237	257	288	308
Feb/17	237	257	301	316
Mar/17	237	258	297	316
Apr/17	237	258	290	311
May/17	237	259	289	317
Jun/17	237	259	305	329
Jul/17	238	259	302	315
Aug/17	239	259	316	340
Sep/17	239	259	323	344
Oct/17	240	260	326	348
Nov/17	239	260	316	340
Dec/17	239	260	319	340