

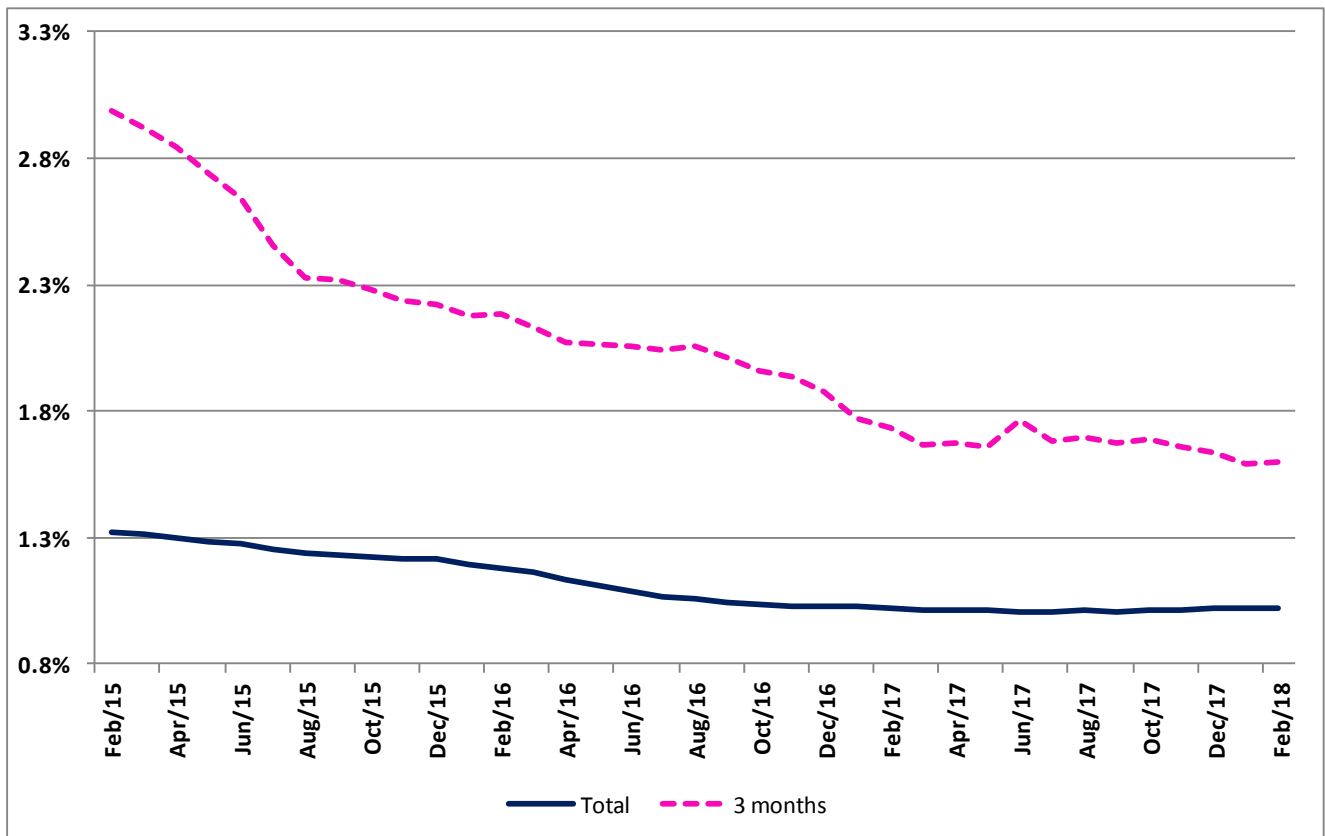
Implicit interest rates in housing loans

February 2018

**Interest rate decreased slightly to 1.023%**

The implicit interest rate for all housing loan agreements <sup>1</sup> decreased from 1.024% in January to 1.023% in February. The average value of loan repayments was 239 Euros, 1 Euro lower than in the previous month. The average of owed capital decreased to 51,726 Euros.

**Implicit interest rates in housing loans**



<sup>1</sup> Additional details on how these statistics are compiled are available from the Implicit interest rates in housing loans methodology, which can be downloaded from <http://smi.ine.pt/UploadFile/Download/542>. This methodology is only available in Portuguese.

Monthly Average

Period	Total		3 months	
		from which Housing Acquisition		from which Housing Acquisition

**Implicit interest rates in housing loans (%)**

<b>Feb/17</b>	1.018%	1.033%	1.732%	1.696%
<b>Mar/17</b>	1.016%	1.031%	1.665%	1.628%
<b>Apr/17</b>	1.012%	1.028%	1.675%	1.646%
<b>May/17</b>	1.012%	1.030%	1.660%	1.624%
<b>Jun/17</b>	1.007%	1.027%	1.766%	1.752%
<b>Jul/17</b>	1.009%	1.029%	1.681%	1.673%
<b>Aug/17</b>	1.014%	1.035%	1.696%	1.687%
<b>Sep/17</b>	1.009%	1.031%	1.677%	1.668%
<b>Oct/17</b>	1.016%	1.038%	1.686%	1.681%
<b>Nov/17</b>	1.017%	1.039%	1.660%	1.658%
<b>Dec/17</b>	1.019%	1.041%	1.634%	1.631%
<b>Jan/18</b>	1.024%	1.045%	1.595%	1.588%
<b>Feb/18</b>	1.023%	1.045%	1.602%	1.598%

**Average of owed capital (Euros)**

<b>Feb/17</b>	51,615	58,219	89,219	96,306
<b>Mar/17</b>	51,537	58,166	91,215	98,175
<b>Apr/17</b>	51,512	58,118	89,805	96,757
<b>May/17</b>	51,535	58,021	89,359	96,640
<b>Jun/17</b>	51,532	57,963	90,884	97,668
<b>Jul/17</b>	51,592	58,046	92,052	98,565
<b>Aug/17</b>	51,560	58,019	92,714	99,643
<b>Sep/17</b>	51,521	57,965	94,003	100,242
<b>Oct/17</b>	51,571	58,017	95,520	101,960
<b>Nov/17</b>	51,646	58,121	93,526	99,909
<b>Dec/17</b>	51,690	58,188	93,788	100,034
<b>Jan/18</b>	51,728	58,252	94,049	100,892
<b>Feb/18</b>	51,726	58,253	94,782	101,729

**Loan Prepayments (Euros)**

<b>Feb/17</b>	237	257	301	316
<b>Mar/17</b>	237	258	297	316
<b>Apr/17</b>	237	258	290	311
<b>May/17</b>	237	259	289	317
<b>Jun/17</b>	237	259	305	329
<b>Jul/17</b>	238	259	302	315
<b>Aug/17</b>	239	259	316	340
<b>Sep/17</b>	239	259	323	344
<b>Oct/17</b>	240	260	326	348
<b>Nov/17</b>	239	260	316	340
<b>Dec/17</b>	239	260	319	340
<b>Jan/18</b>	240	261	307	329
<b>Feb/18</b>	239	261	319	344