

96/2018 - 15 June 2018

April 2018

Euro area international trade in goods surplus

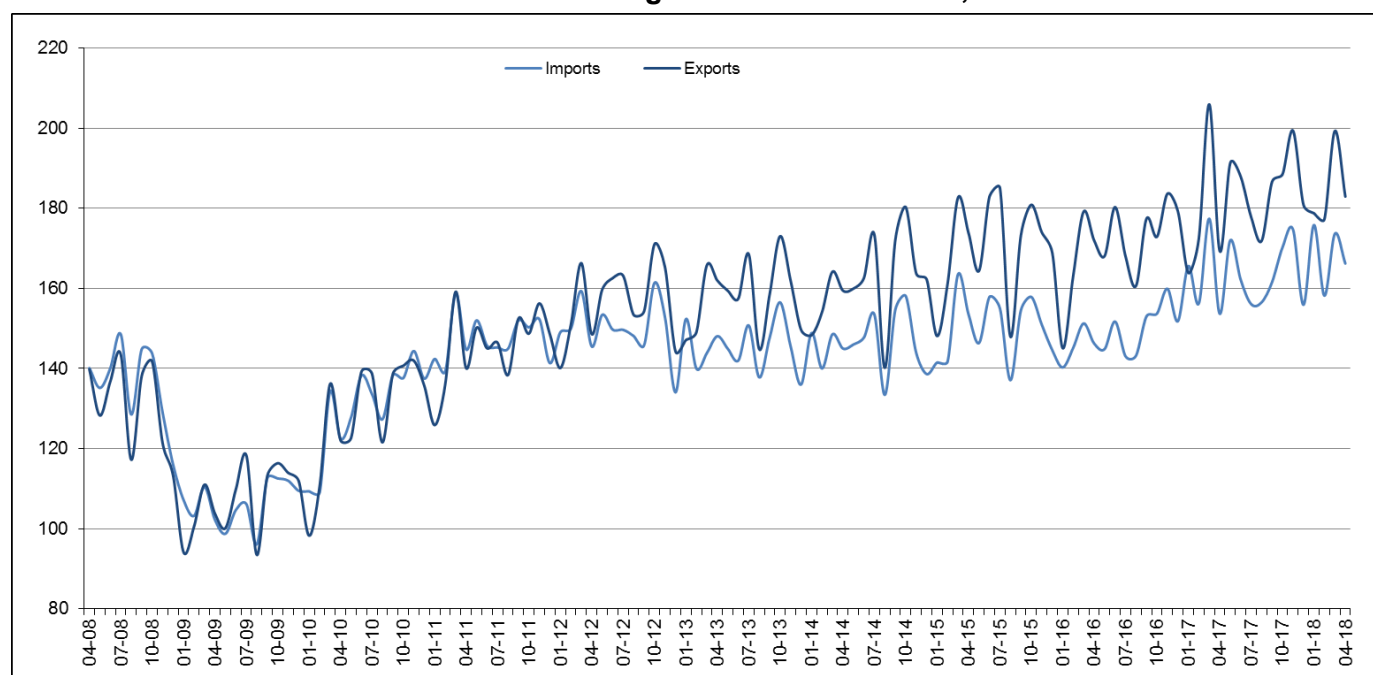
€16.7 bn

€1.0 bn deficit for EU28

Euro area

The first estimate for **euro area** (EA19) exports of goods to the rest of the world in April 2018 was €182.9 billion, an increase of 8.0% compared with April 2017 (€169.3 bn). Imports from the rest of the world stood at €166.2 bn, a rise of 8.1% compared with April 2017 (€153.7 bn). As a result, the **euro area** recorded a €16.7 bn surplus in trade in goods with the rest of the world in April 2018, compared with +€15.7 bn in April 2017. **Intra-euro area** trade rose to €157.4 bn in April 2018, up by 9.8% compared with April 2017.

International trade in goods of the euro area, € bn



In January to April 2018, **euro area** exports of goods to the rest of the world rose to €738.2 bn (an increase of 3.8% compared with January-April 2017), while imports rose to €673.8 bn (an increase of 3.2% compared with January-April 2017). As a result the **euro area** recorded a surplus of €64.4 bn, compared with +€58.7 bn in January-April 2017. **Intra-euro area** trade rose to €644.4 bn in January-April 2018, up by 5.7% compared with January-April 2017.

EA19 trade - non seasonally adjusted data

bn €

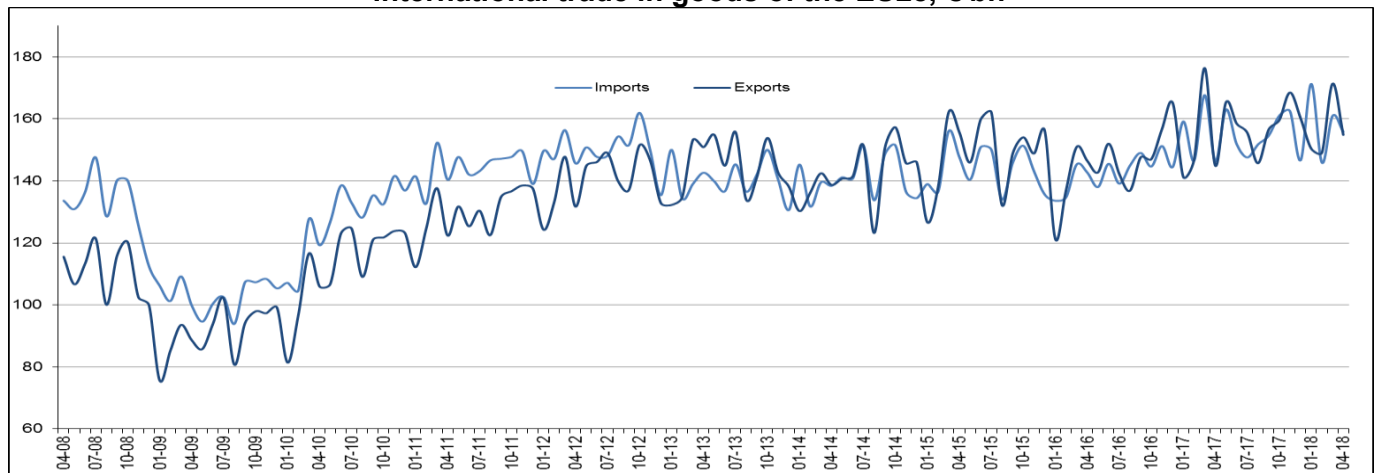
Flows	Apr 17	Apr 18	Growth	Jan-Apr 17	Jan-Apr 18	Growth
Extra-EA19 exports	169.3	182.9	8.0%	711.5	738.2	3.8%
Extra-EA19 imports	153.7	166.2	8.1%	652.8	673.8	3.2%
Extra-EA19 trade balance	15.7	16.7		58.7	64.4	
Intra-EA19 trade	143.3	157.4	9.8%	609.5	644.4	5.7%

The source dataset is available [here](#).

European Union

The first estimate for **extra-EU28** exports of goods in April 2018 was €154.8 billion, up by 6.8% compared with April 2017 (€144.9 bn). Imports from the rest of the world stood at €155.9 bn, up by 6.6% compared with April 2017 (€146.3 bn). As a result, the **EU28** recorded a €1.0 bn deficit in trade in goods with the rest of the world in April 2018, compared with -€1.4 bn in April 2017. **Intra-EU28** trade rose to €283.8 bn in April 2018, +9.2% compared with April 2017.

International trade in goods of the EU28, € bn



In January to April 2018, **extra-EU28** exports of goods rose to €625.7 bn (an increase of 2.7% compared with January-April 2017), while imports rose to €634.0 bn (an increase of 2.3% compared with January-April 2017). As a result, the **EU28** recorded a deficit of €8.3 bn, compared with -€10.4 bn in January-April 2017. **Intra-EU28** trade rose to €1 160.2 bn in January-April 2018, +5.2% compared with January-April 2017.

EU28 trade - non seasonally adjusted data

bn €

Flows	Apr 17	Apr 18	Growth	Jan-Apr 17	Jan-Apr 18	Growth
Extra-EU28 exports	144.9	154.8	6.8%	609.3	625.7	2.7%
Extra-EU28 imports	146.3	155.9	6.6%	619.7	634.0	2.3%
Extra-EU28 trade balance	-1.4	-1.0		-10.4	-8.3	
Intra-EU28 trade	259.9	283.8	9.2%	1 102.5	1 160.2	5.2%

The source dataset is available [here](#).

Main products - EU28

bn €

	Extra-EU28 exports			Extra-EU28 imports			Trade balance	
	Jan-Apr 17	Jan-Apr 18	Growth	Jan-Apr 17	Jan-Apr 18	Growth	Jan-Apr 17	Jan-Apr 18
Total	609.3	625.7	2.7%	619.7	634.0	2.3%	-10.4	-8.3
Primary goods:	89.0	89.2	0.2%	181.8	190.6	4.8%	-92.8	-101.4
<i>Food & drink</i>	38.9	38.6	-0.8%	38.0	36.6	-3.7%	0.9	1.9
<i>Raw materials</i>	17.0	17.0	0.0%	26.6	26.8	0.8%	-9.6	-9.8
<i>Energy</i>	33.1	33.6	1.5%	117.3	127.2	8.4%	-84.2	-93.6
Manufactured goods:	500.0	518.4	3.7%	417.9	423.7	1.4%	82.2	94.7
<i>Chemicals</i>	111.9	118.9	6.3%	67.4	66.3	-1.6%	44.5	52.6
<i>Machinery & vehicles</i>	251.9	257.2	2.1%	194.2	197.8	1.9%	57.7	59.5
<i>Other manuf'd goods</i>	136.2	142.3	4.5%	156.3	159.6	2.1%	-20.1	-17.4
Other	20.2	18.1	-10.4%	20.0	19.7	-1.5%	0.2	-1.6

The source dataset is available [here](#).

Main trading partners - EU28

bn €

	EU28 exports to			EU28 imports from			Trade balance	
	Jan-Apr 17	Jan-Apr 18	Growth	Jan-Apr 17	Jan-Apr 18	Growth	Jan-Apr 17	Jan-Apr 18
United States	126.9	130.7	3.0%	88.1	85.4	-3.1%	38.8	45.4
China	62.8	64.5	2.7%	118.7	121.4	2.3%	-55.9	-56.9
Switzerland	50.5	48.9	-3.2%	36.4	35.6	-2.2%	14.1	13.3
Russia	26.6	27.9	4.9%	51.3	53.1	3.5%	-24.8	-25.3
Turkey	26.4	29.5	11.7%	23.3	25.3	8.6%	3.1	4.2
Japan	19.7	21.9	11.2%	23.5	23.8	1.3%	-3.8	-1.9
Norway	16.5	16.9	2.4%	27.2	28.1	3.3%	-10.7	-11.2
South Korea	15.5	16.7	7.7%	17.4	16.4	-5.7%	-1.9	0.3
India	13.2	14.6	10.6%	15.4	15.8	2.6%	-2.2	-1.1
Canada	12.5	13.2	5.6%	10.7	10.2	-4.7%	1.8	2.9

The source dataset is available [here](#).

Member States' total trade (intra-EU + extra-EU)

bn €

	Total exports						Total imports						Trade balance					
	Total		Intra-EU		Extra-EU		Total		Intra-EU		Extra-EU		Total		Intra-EU		Extra-EU	
	Jan-Apr 18	Growth / Jan-Apr 17	Jan-Apr 18	Growth / Jan-Apr 17	Jan-Apr 18	Growth / Jan-Apr 17	Jan-Apr 18	Growth / Jan-Apr 17	Jan-Apr 18	Growth / Jan-Apr 17	Jan-Apr 18	Growth / Jan-Apr 17	Jan-Apr 18	Jan-Apr 17	Jan-Apr 18	Jan-Apr 17	Jan-Apr 18	Jan-Apr 17
Belgium	130.7	3%	93.8	2%	36.9	5%	124.1	2%	79.5	2%	44.6	1%	6.6	4.7	14.3	13.8	-7.7	-9.1
Bulgaria	8.5	3%	6.1	14%	2.4	-16%	10.1	6%	6.7	11%	3.4	-2%	-1.6	-1.3	-0.6	-0.7	-1.0	-0.6
Czech Republic	55.8	7%	47.1	8%	8.7	3%	49.5	8%	38.6	8%	10.9	9%	6.2	6.0	8.5	7.6	-2.2	-1.6
Denmark	29.8	0%	18.2	0%	11.5	-1%	29.3	10%	20.4	8%	8.9	13%	0.5	3.2	-2.1	-0.6	2.6	3.8
Germany	439.7	5%	263.2	6%	176.5	2%	357.1	4%	237.5	6%	119.6	2%	82.6	78.5	25.7	23.6	56.9	54.9
Estonia	4.5	9%	3.1	5%	1.4	20%	5.2	5%	4.0	2%	1.2	18%	-0.7	-0.8	-0.9	-1.0	0.2	0.1
Ireland	44.2	6%	21.7	6%	22.5	6%	27.2	6%	17.3	2%	9.9	15%	17.0	16.1	4.4	3.5	12.6	12.6
Greece	10.5	13%	5.6	12%	4.9	15%	17.5	0%	9.0	8%	8.5	-8%	-7.1	-8.3	-3.4	-3.3	-3.7	-5.1
Spain	96.6	2%	64.9	2%	31.7	3%	107.4	4%	63.1	4%	44.3	4%	-10.8	-8.4	1.8	3.2	-12.6	-11.6
France	162.2	5%	98.6	6%	63.7	4%	189.9	3%	133.4	4%	56.5	0%	-27.7	-30.6	-34.8	-35.3	7.2	4.7
Croatia	4.5	2%	3.1	8%	1.4	-9%	7.5	6%	5.9	7%	1.6	5%	-3.0	-2.6	-2.8	-2.7	-0.2	0.1
Italy	148.7	4%	85.8	6%	63.0	2%	138.2	4%	82.4	5%	55.8	2%	10.5	10.2	3.3	2.7	7.1	7.5
Cyprus	1.6	99%	0.4	6%	1.2	167%	2.9	19%	1.6	11%	1.3	32%	-1.3	-1.6	-1.3	-1.1	0.0	-0.5
Latvia	4.1	9%	2.8	6%	1.3	16%	4.8	7%	3.7	5%	1.1	13%	-0.7	-0.7	-0.9	-0.9	0.2	0.2
Lithuania	8.6	6%	5.1	7%	3.5	6%	9.6	7%	6.7	6%	2.9	7%	-1.0	-0.9	-1.6	-1.5	0.6	0.6
Luxembourg	4.7	-2%	4.0	2%	0.7	-16%	6.6	-2%	5.7	3%	0.9	-23%	-2.0	-2.0	-1.7	-1.6	-0.2	-0.4
Hungary	34.7	6%	28.3	6%	6.4	3%	33.0	7%	25.0	8%	8.0	7%	1.7	2.1	3.3	3.4	-1.6	-1.3
Malta	0.8	26%	0.5	39%	0.3	11%	1.6	2%	1.2	23%	0.4	-32%	-0.8	-0.9	-0.7	-0.6	-0.1	-0.3
Netherlands	196.1	4%	146.7	3%	49.5	7%	175.9	6%	82.8	9%	93.2	4%	20.2	22.0	63.9	65.8	-43.7	-43.7
Austria	51.5	5%	37.2	6%	14.3	4%	53.6	5%	41.4	6%	12.2	0%	-2.1	-2.3	-4.3	-3.9	2.2	1.6
Poland	70.1	4%	56.4	5%	13.8	2%	70.8	7%	49.3	4%	21.6	14%	-0.7	1.1	7.1	6.7	-7.8	-5.5
Portugal	19.2	6%	14.8	10%	4.5	-4%	23.9	8%	18.3	9%	5.6	5%	-4.7	-4.0	-3.5	-3.3	-1.2	-0.7
Romania	22.1	9%	17.1	11%	5.0	3%	25.9	10%	19.6	9%	6.3	11%	-3.8	-3.3	-2.6	-2.6	-1.3	-0.8
Slovenia	12.2	13%	9.4	14%	2.8	9%	11.4	12%	7.7	9%	3.7	21%	0.8	0.7	1.7	1.1	-0.9	-0.5
Slovakia	25.5	5%	22.2	7%	3.4	-5%	25.2	6%	20.1	6%	5.1	2%	0.3	0.5	2.0	1.9	-1.7	-1.4
Finland	21.1	10%	12.7	11%	8.4	8%	21.5	6%	14.9	7%	6.5	4%	-0.4	-1.0	-2.3	-2.5	1.9	1.6
Sweden	45.8	3%	27.2	3%	18.6	3%	46.9	5%	33.4	5%	13.4	3%	-1.1	-0.4	-6.2	-5.4	5.2	5.0
United Kingdom	132.1	0%	64.6	4%	67.5	-3%	186.0	-1%	99.3	1%	86.7	-3%	-54.0	-56.8	-34.8	-36.8	-19.2	-20.0

The source dataset is available [here](#).

Geographical information

The **euro area** (EA19) includes Belgium, Germany, Estonia, Ireland, Greece, Spain, France, Italy, Cyprus, Latvia, Lithuania, Luxembourg, Malta, the Netherlands, Austria, Portugal, Slovenia, Slovakia and Finland.

The **European Union** (EU28) includes Belgium, Bulgaria, the Czech Republic, Denmark, Germany, Estonia, Ireland, Greece, Spain, France, Croatia, Italy, Cyprus, Latvia, Lithuania, Luxembourg, Hungary, Malta, the Netherlands, Austria, Poland, Portugal, Romania, Slovenia, Slovakia, Finland, Sweden and the United Kingdom.

Methods and definitions

Since the introduction of Intrastat for intra-EU trade on 1 January 1993, the value of dispatches has been consistently higher than that of arrivals. In theory, as dispatches are declared FOB and arrivals CIF, the value of arrivals should be slightly higher than that of dispatches. Eurostat uses dispatches as the more reliable measure of total intra-EU trade as, at aggregated levels, total dispatches has better coverage than total arrivals. Due to this divergence in intra-EU trade, and to the difficulties of interpreting figures in absolute terms at the level of individual Member States, trade balances for individual Member States must be interpreted with caution. The same caution applies to the trade balance of the euro area, which includes some intra-EU trade.

National concepts may differ from the harmonised methodology used by Eurostat, leading to differences between figures in this release and those published nationally, both for raw data and for seasonally adjusted series.

Products are classified according to the Standard international trade classification (SITC), Revision 4.

Revisions and timetable

This News Release is based on data available on 12 June 2018. These are provisional figures based on information provided by Member States. They are subject to frequent revision for up to two years after the month in question.

For more information

Eurostat website section on international trade in goods

Eurostat database section on international trade in goods

Eurostat Statistics Explained article on international trade in goods statistics

Eurostat €-indicators release calendar

Issued by: **Eurostat Press Office**

Baiba GRANDOVSKA
Tel: +352-4301-33 444
eurostat-pressoffice@ec.europa.eu


For further information on data:

Michele MAROTTA
Tel: +352-4301-32 493
estat-etfree@ec.europa.eu

 [EurostatStatistics](#)

 ec.europa.eu/eurostat/

 [@EU_Eurostat](#)

 **Media requests:** Eurostat media support / Tel: +352-4301-33 408 / eurostat-mediasupport@ec.europa.eu

Annex - Seasonally adjusted data

In April 2018 compared with March 2018, euro area seasonally adjusted exports increased by 0.3%, while imports increased by 1.4%. The seasonally adjusted balance was +€18.1 bn, a fall compared with March (+€19.8 bn).

EA19 trade - seasonally adjusted data

bn €

Flows	May 17	Jun 17	Jul 17	Aug 17	Sep 17	Oct 17	Nov 17	Dec 17	Jan 18	Feb 18	Mar 18	Apr 18
Extra-EA19 exports	184.7	180.8	178.6	183.6	185.1	181.1	188.8	192.0	190.2	185.4	186.3	187.0
Extra-EA19 imports	165.9	159.9	161.7	163.0	161.4	163.5	168.3	169.0	170.7	165.0	166.5	168.8
Extra-EA19 trade balance	18.8	21.0	16.9	20.6	23.7	17.7	20.5	23.0	19.5	20.4	19.8	18.1
Intra-EA19 trade	155.3	152.0	153.4	155.3	154.4	155.4	158.6	160.3	160.2	157.3	158.8	160.4

The source dataset is available [here](#).

In April 2018 compared with March 2018, EU28 seasonally adjusted exports fell by 1.9%, while imports rose by 1.6%. The seasonally adjusted balance was -€0.6 bn, a fall compared with March (+€4.8 bn).

EU28 trade - seasonally adjusted data

bn €

Flows	May 17	Jun 17	Jul 17	Aug 17	Sep 17	Oct 17	Nov 17	Dec 17	Jan 18	Feb 18	Mar 18	Apr 18
Extra-EU28 exports	158.3	153.1	154.8	153.7	157.3	154.3	160.4	164.2	162.6	157.5	161.1	158.1
Extra-EU28 imports	158.1	150.4	151.7	153.3	154.6	154.7	157.5	159.2	164.4	154.7	156.3	158.8
Extra-EU28 trade balance	0.2	2.7	3.1	0.4	2.7	-0.4	2.9	5.0	-1.8	2.9	4.8	-0.6
Intra-EU28 trade	280.8	276.7	277.0	282.3	281.1	282.0	286.3	291.1	291.1	284.8	285.2	289.3

The source dataset is available [here](#).

Contribution of EU28 Member States to extra-EU28 trade - seasonally adjusted data

bn €

	Total exports			Total imports			Trade balance	
	Mar 18	Apr 18	Growth	Mar 18	Apr 18	Growth	Mar 18	Apr 18
EU28	161.1	158.1	-1.9%	156.3	158.8	1.6%	4.8	-0.6
Belgium	8.9	8.3	-5.9%	10.9	10.9	0.2%	-2.0	-2.6
Bulgaria	0.7	0.6	-4.0%	0.8	0.9	12.3%	-0.1	-0.2
Czech Republic	2.1	2.2	2.6%	2.6	2.9	11.0%	-0.4	-0.7
Denmark	3.0	2.9	-5.1%	2.1	2.1	-0.2%	0.9	0.7
Germany	44.8	44.7	-0.3%	29.1	30.3	4.1%	15.7	14.4
Estonia	0.4	0.4	-3.2%	0.3	0.3	-6.4%	0.1	0.1
Ireland	4.9	5.6	13.7%	2.9	1.9	-37.1%	2.0	3.7
Greece	1.4	1.2	-14.3%	2.0	2.0	-1.5%	-0.6	-0.8
Spain	8.1	8.3	2.4%	10.4	11.8	13.0%	-2.3	-3.5
France	17.1	16.7	-2.0%	13.8	14.2	3.0%	3.2	2.5
Croatia	0.4	0.4	3.3%	0.5	0.4	-15.5%	-0.1	0.0
Italy	16.6	16.6	-0.1%	13.8	14.1	1.8%	2.8	2.6
Cyprus	0.7	0.2	-72.2%	0.3	0.5	41.2%	0.4	-0.2
Latvia	0.3	0.4	11.7%	0.3	0.3	0.6%	0.1	0.1
Lithuania	1.0	0.9	-5.3%	0.8	0.6	-26.6%	0.2	0.3
Luxembourg	0.2	0.2	-8.9%	0.2	0.2	4.3%	0.0	-0.1
Hungary	1.6	1.6	-0.6%	2.0	2.1	7.8%	-0.3	-0.5
Malta	0.1	0.1	-1.7%	0.1	0.1	34.2%	0.0	0.0
Netherlands	12.6	12.2	-3.2%	22.6	23.3	3.0%	-10.0	-11.1
Austria	3.7	3.6	-3.1%	3.5	3.2	-10.2%	0.2	0.4
Poland	3.6	3.6	-0.6%	5.4	5.4	1.2%	-1.8	-1.9
Portugal	1.1	1.2	9.2%	1.4	1.5	7.6%	-0.3	-0.3
Romania	1.4	1.2	-10.2%	1.7	1.6	-6.5%	-0.3	-0.3
Slovenia	0.7	0.7	-1.3%	0.9	0.8	-11.0%	-0.2	-0.1
Slovakia	0.9	0.9	-3.5%	1.1	1.2	6.4%	-0.2	-0.3
Finland	2.1	2.0	-4.7%	1.6	1.6	-0.8%	0.5	0.4
Sweden	4.6	4.6	0.1%	3.2	3.5	11.1%	1.4	1.1
United Kingdom	18.1	16.8	-6.8%	22.0	21.2	-3.3%	-3.9	-4.4

The source dataset is available [here](#).

International trade in goods balance, seasonally adjusted, € bn

